

11-7550: Polyclonal Antibody to INI-1/SNF5

Clonality :	Polyclonal
Application :	WB
Reactivity :	Human
Gene :	SMARCB1
Gene ID :	6598
Uniprot ID :	Q12824
Format :	Purified
Alternative Name :	SMARCB1,BAF47,INI1,SNF5L1
Isotype :	Rabbit IgG
Immunogen Information :	A partial length recombinant INI-1/SNF5 protein (amino acids 11-231) was used as the immunogen for this antibody.

Description

SNF5/INI1 is the core subunit of the SWI/SNF chromatin remodeling complex that contributes to the regulation of chromatin structure. It is a tumor suppressor in humans and mice, with an essential role in early embryonic development. SNF5 interacts with UV damage recognition factor XPC and colocalizes at the damage site upon UV irradiation. Inactivation of SNF5 affects the recruitment of ATM checkpoint kinase to the damage site and ATM activation by phosphorylation. SNF5 deficiency results in a defect in H2AX and BRCA1 phosphorylation at the damage site. SNF5/INI1 forms a functional complex with p300/GATA4 on hypertrophic response gene promoters in cardiomyocytes. It plays an inhibitory role in cardiomyocyte hypertrophy by suppressing p300/GATA4-dependent transcription. SNF5 genetic mutations were first reported in malignant rhabdoid tumors.

Product Info

Amount :	25 µg / 100 µg
Purification :	Protein A Chromatography
Content :	25 µg in 50 µl/100 µg in 200 µl PBS containing 0.05% BSA and 0.05% sodium azide. Sodium azide is highly toxic.
Storage condition :	Store the antibody at 4°C; stable for 6 months. For long-term storage; store at -20°C. Avoid repeated freeze and thaw cycles.

Application Note

Western blot analysis: 1-2 Åµg/ml

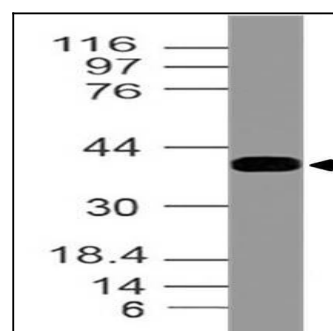


Fig-1: Expression analysis of INI-1/SNF5. Anti-INI-1/SNF5 antibody (11-7550) was used at 1 µg/ml on MCF-7 lysate.