

11-4041: Polyclonal Antibody to PU.1

Clonality :	Polyclonal
Application :	WB
Reactivity :	Human
Gene :	SPI1
Gene ID :	6688
Uniprot ID :	P17947
Format :	Purified
Alternative Name :	SPI1
Isotype :	Rabbit IgG
Immunogen Information :	A partial length recombinant PU.1 protein (amino acids 1-190) was used as the immunogen for this antibody.

Product Info

Amount :	25 µg / 100 µg
Purification :	Protein A Chromatography
Content :	25 µg in 50 µl/100 µg in 200 µl PBS containing 0.05% BSA and 0.05% sodium azide. Sodium azide is highly toxic.
Storage condition :	Store the antibody at 4°C, stable for 6 months. For long-term storage, store at -20°C. Avoid repeated freeze and thaw cycles.

Application Note

Western blot analysis: 2-4 Åµg/ml

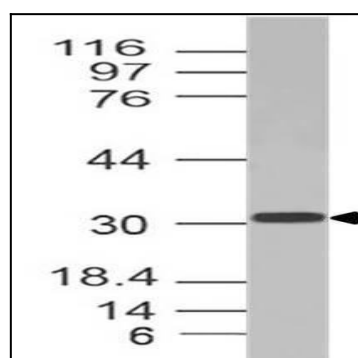


Fig-1: Western blot analysis of PU.1. Anti-PU.1 antibody (11-4041) was used at 4 µg/ml on Spleen lysate.