

## 11-10018: Polyclonal Antibody to UBE1L2/MOP-4

<b>Clonality :</b>	Polyclonal
<b>Application :</b>	WB
<b>Reactivity :</b>	Human
<b>Gene :</b>	UBA6
<b>Gene ID :</b>	55236
<b>Uniprot ID :</b>	A0AVT1
<b>Format :</b>	Purified
<b>Alternative Name :</b>	UBA6,MOP4,UBE1L2
<b>Isotype :</b>	Rabbit IgG
<b>Immunogen Information :</b>	A partial length recombinant UBE1L2 protein (amino acids 710-955) was used as the immunogen for this antibody.

### Description

Uba6/UBE1L2/MOP-4 is an ubiquitin-specific E1 type enzyme, homolog of the ubiquitin-activating enzyme, Uba1, which activates two ubiquitin-like proteins (UBLs), ubiquitin and FAT10. Some recent experiments suggest a testis-specific function of UBE1L2. UBE1L2 forms a thioester with FAT10 and this reaction requires the active-site cysteine of UBE1L2 and the C-terminal diglycine motif of FAT10. It can transfer ubiquitin to Ubc5 and Ubc13, suggesting its specialized role in ubiquitination reactions.

### Product Info

<b>Amount :</b>	25 µg / 100 µg
<b>Purification :</b>	Protein A Chromatography
<b>Content :</b>	25 µg in 50 µl/100 µg in 200 µl PBS containing 0.05% BSA and 0.05% sodium azide. Sodium azide is highly toxic.
<b>Storage condition :</b>	Store the antibody at 4°C, stable for 6 months. For long-term storage, store at -20°C. Avoid repeated freeze and thaw cycles.

### Application Note

Western blot analysis: 2-4 µg/ml

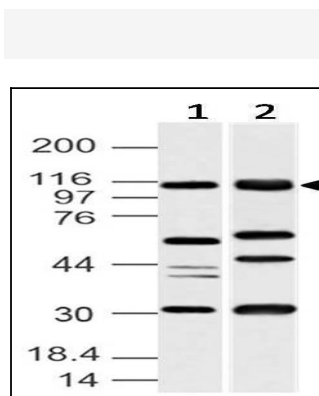


Fig-1: Western blot analysis of UBE1L2/MOP-4. Anti-UBE1L2/MOP-4 antibody (11-10018) was used at 4 µg/ml on (1) Jurkat and (2) K562 lysates.