

11-4033: Polyclonal Antibody to Nucleophosmin

Clonality :	Polyclonal
Application :	IHC,WB
Reactivity :	Human
Gene :	NPM1
Gene ID :	4869
Uniprot ID :	P06748
Format :	Purified
Alternative Name :	Nucleolar phosphoprotein B23, Nucleolar protein NO38, Numatrin, NPM
Isotype :	Rabbit IgG
Immunogen Information :	A partial length recombinant Nucleophosmin protein (amino acids 18-236) was used as the immunogen for this antibody.

Description

Nucleophosmin (NPM1) is a multifunctional, ubiquitously expressed nucleolar phosphoprotein which shuttles continuously between the nucleus and cytoplasm and plays an important role in cell proliferation and apoptosis. This protein exerts its functions through the interaction with a multiplicity of biological partners, specifically recognizes DNA G-quadruplexes through its C-terminal region. It is mainly localized in the nucleolus and has been reported to be overexpressed in many types of human cancer, including colon, ovarian, prostate and gastric cancer. Mutations at exon 12 of NPM1 gene is a hallmark of cytogenetically normal acute myeloid leukemia.

Product Info

Amount :	25 µg / 100 µg
Purification :	Protein A Chromatography
Content :	25 µg in 50 µl/100 µg in 200 µl PBS containing 0.05% BSA and 0.05% sodium azide. Sodium azide is highly toxic.
Storage condition :	Store the antibody at 4°C, stable for 6 months. For long-term storage, store at -20°C. Avoid repeated freeze and thaw cycles.

Application Note

Western blot analysis: 2-4 µg/ml, Immunohistochemical analysis: 5 µg/ml

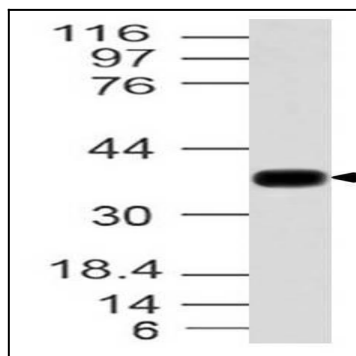


Fig-1: Western blot analysis of Nucleophosmin. Anti- Nucleophosmin antibody (11-4033) was used at 2 $\mu\text{g}/\text{ml}$ on Hela lysate.

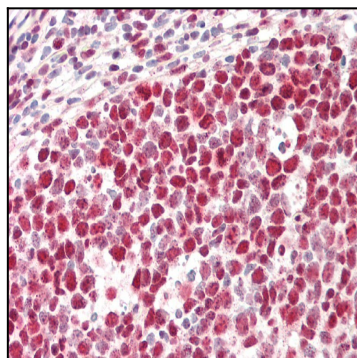


Fig-2: Immunohistochemical analysis of Nucleophosmin. Anti-Nucleophosmin antibody (11-4033) in human Tonsil tissue at 5 $\mu\text{g}/\text{ml}$.