

11-3029: Polyclonal Antibody to IMPDHII

Clonality :	Polyclonal
Application :	WB
Reactivity :	Human
Gene :	IMPDH2
Gene ID :	3615
Uniprot ID :	P12268
Format :	Purified
Alternative Name :	IMPDH2, IMPD2
Isotype :	Rabbit IgG
Immunogen Information :	A partial length recombinant IMPDHII protein (amino acids 48-351) was used as the immunogen for this antibody.

Description

IMPDH2 (Human type II inosine monophosphate dehydrogenase) is a key enzyme in the purine nucleotide biosynthetic pathway and constitutes a pivotal biological target for immunosuppressant and antiviral drugs. The enzymatic reaction involves the NAD-dependent oxidation of inosine-5'-monophosphate into xanthine-5'-monophosphate, which is then converted into guanosine-5'-monophosphate. It is increased more than 10-fold in activated peripheral blood T lymphocytes and is required for T cell activation. Type II isoform of the enzyme is selectively upregulated in neoplastic fast replicating lymphocytes and CML cancer cells. Thus, the IMPDH2 is an excellent target for antileukemic agent.

Product Info

Amount :	25 µg / 100 µg
Purification :	Protein A Chromatography
Content :	25 µg in 50 µl/100 µg in 200 µl PBS containing 0.05% BSA and 0.05% sodium azide. Sodium azide is highly toxic.
Storage condition :	Store the antibody at 4°C, stable for 6 months. For long-term storage, store at -20°C. Avoid repeated freeze and thaw cycles.

Application Note

Western blot analysis: 2-4 Åµg/ml

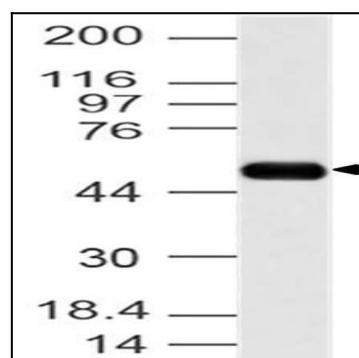


Fig-1: Western blot analysis of IMPDHII. Anti- IMPDHII antibody (11-3029) was used at 2 µg/ml on K562 lysate.