

## 11-10026: Polyclonal Antibody to Brachyury

<b>Clonality :</b>	Polyclonal
<b>Application :</b>	WB
<b>Reactivity :</b>	Human
<b>Gene :</b>	TBXT
<b>Gene ID :</b>	6862
<b>Uniprot ID :</b>	O15178
<b>Format :</b>	Purified
<b>Alternative Name :</b>	T, Brachyury proteinCurated, Protein T
<b>Isotype :</b>	Rabbit IgG
<b>Immunogen Information :</b>	A partial length recombinant Brachyury protein (amino acids 200-410) was used as the immunogen for this antibody.

### Description

Brachyury is a transcription factor encoded by T, a member of the T-box gene family, and required for posterior mesoderm formation and differentiation as well as for notochord development. It is expressed in all nascent mesoderm, in the embryo. Along with embryonic differentiation, it is downregulated, restricted into the notochord and the tail bud, and then lost, when notochordal cells are replaced by bone in the vertebral bodies and by the nucleus pulposus in the intervertebral discs. In the adult, brachyury expression has been found in chordoma, a malignant tumor which recapitulates notochord and derives from small collections of notochordal cells which may persist into the adult life.

### Product Info

<b>Amount :</b>	25 µg / 100 µg
<b>Purification :</b>	Protein A Chromatography
<b>Content :</b>	25 µg in 50 µl/100 µg in 200 µl PBS containing 0.05% BSA and 0.05% sodium azide. Sodium azide is highly toxic.
<b>Storage condition :</b>	Store the antibody at 4°C, stable for 6 months. For long-term storage, store at -20°C. Avoid repeated freeze and thaw cycles.

### Application Note

Western blot analysis: 2-4 Åµg/ml

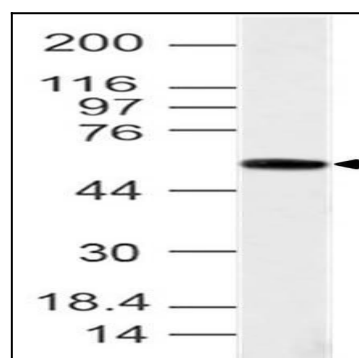


Fig-1: Western blot analysis of Brachyury. Anti- Brachyury antibody (11-10026) was used at 4 µg/ml on Testis lysate.