

11-4037: Polyclonal Antibody to CADM1

Clonality :	Polyclonal
Application :	WB
Reactivity :	Human
Gene :	CADM1
Gene ID :	23705
Uniprot ID :	Q9BY67
Format :	Purified
Alternative Name :	CADM1,IGSF4,IGSF4A,NECL2,SYNCAM,TSLC1
Isotype :	Rabbit IgG
Immunogen Information :	A partial length recombinant CADM1 protein (amino acids 50-250) was used as the immunogen for this antibody.

Description

Cell Adhesion Molecule 1 (CADM1) encodes a multifunctional immunoglobulin-like cell adhesion molecule whose cytoplasmic domain contains a type II PSD95/Dlg/ZO-1 (PDZ)-binding motif (BM) for associating with other intracellular proteins. CADM1 lacks expression in T lymphocytes of healthy individuals and is overexpressed in adult T-cell leukemia-lymphoma (ATL) cells. CADM1 generates a membrane-associated C-terminal fragment, AlphaCTF, through A disintegrin- and metalloprotease-10-mediated ectodomain shedding, subsequently releasing the intracellular domain (ICD) through gamma-secretase-mediated intramembrane shedding of alphaCTF. alphaCTF localizes to mitochondria and induces apoptosis in lung epithelial cells. In women with multiple cervical biopsies, CADM1/MAL methylation increases with severity of the lesion and is lesion-specific. CADM1/MAL methylation status in cervical scrapes appears to be representative of the worst underlying lesion, particularly for CIN3 and cervical cancer.

Product Info

Amount :	25 µg / 100 µg
Purification :	Protein A Chromatography
Content :	25 µg in 50 µl/100 µg in 200 µl PBS containing 0.05% BSA and 0.05% sodium azide. Sodium azide is highly toxic.
Storage condition :	Store the antibody at 4°C, stable for 6 months. For long-term storage, store at -20°C. Avoid repeated freeze and thaw cycles.

Application Note

Western blot analysis: 2-4 Åµg/ml

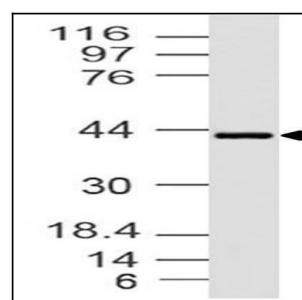


Fig-1: Western blot analysis of CADM1. Anti-CADM1 antibody (11-4037) was used at 4 µg/ml on HCT-116 lysate.