

## 11-4021: Polyclonal Antibody to NR2F6

<b>Clonality :</b>	Polyclonal
<b>Application :</b>	IHC,WB
<b>Reactivity :</b>	Human
<b>Gene :</b>	NR2F6
<b>Gene ID :</b>	2063
<b>Uniprot ID :</b>	P10588
<b>Format :</b>	Purified
<b>Alternative Name :</b>	NR2F6,EAR2,ERBAL2
<b>Isotype :</b>	Rabbit IgG
<b>Immunogen Information :</b>	A partial length recombinant NR2F6 protein (amino acids 210-400) was used as the immunogen for this antibody.

### Description

NR2F6 (Nuclear receptor subfamily 2 group F member 6) is a nuclear zinc-finger orphan receptor which acts as a critical PKC (protein kinase C) substrate and essential regulator of CD4(+) T cell activation responses. It inhibits NFATC (Nuclear factor of activated T-cells) transcription factor DNA binding and subsequently its transcriptional activity. It acts as transcriptional repressor of IL-17 expression in Th-17 differentiated CD4+ T cells and may be involved in induction and/or maintenance of peripheral immunological tolerance and autoimmunity. It is involved in development of forebrain circadian clock.

### Product Info

<b>Amount :</b>	25 µg / 100 µg
<b>Purification :</b>	Protein A Chromatography
<b>Content :</b>	25 µg in 50 µl/100 µg in 200 µl PBS containing 0.05% BSA and 0.05% sodium azide. Sodium azide is highly toxic.
<b>Storage condition :</b>	Store the antibody at 4°C, stable for 6 months. For long-term storage, store at -20°C. Avoid repeated freeze and thaw cycles.

### Application Note

Western blot analysis: 2-4 µg/ml, Immunohistochemical analysis: 5 µg/ml

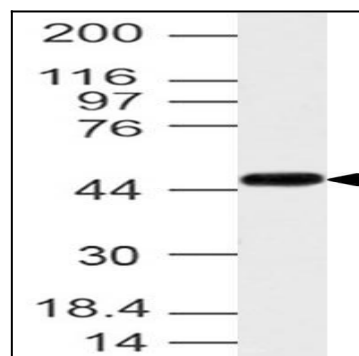


Fig-1: Western blot analysis of NR2F6. Anti-NR2F6 antibody (11-4021) was used at 4 µg/ml on MCF-7 lysate.

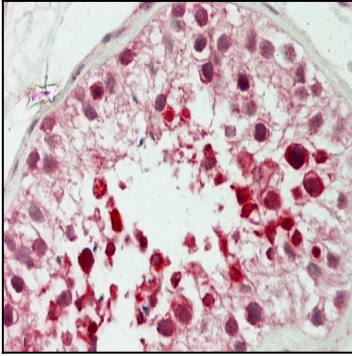


Fig-2: Immunohistochemical analysis of NR2F6. Anti-NR2F6 antibody (11-4021) in human Testis tissue at 5  $\mu$ g/ml.