

## 11-3026: Polyclonal Antibody to Cactin

<b>Clonality :</b>	Polyclonal
<b>Application :</b>	WB
<b>Reactivity :</b>	Human
<b>Gene :</b>	CACTIN
<b>Gene ID :</b>	58509
<b>Uniprot ID :</b>	Q8WUQ7
<b>Format :</b>	Purified
<b>Alternative Name :</b>	CACTIN,C19orf29
<b>Isotype :</b>	Rabbit IgG
<b>Immunogen Information :</b>	A partial length recombinant Cactin protein (amino acids 320-521) was used as the immunogen for this antibody.

### Description

CACTIN is a conserved protein, discovered as a novel interactor of Drosophila I $\kappa$ B protein Cactus. It is highly conserved during evolution and plays a key role in early embryonic development. It is characterized as a negative regulator of many different developmental processes, but only found to play an immune role in humans. CACTIN localizes to nuclear speckles and colocalizes with known splicing proteins. It binds to a putative component of the spliceosome, major role for CACTIN in splicing.

### Product Info

<b>Amount :</b>	25 $\mu$ g / 100 $\mu$ g
<b>Purification :</b>	Protein A Chromatography
<b>Content :</b>	25 $\mu$ g in 50 $\mu$ l/100 $\mu$ g in 200 $\mu$ l PBS containing 0.05% BSA and 0.05% sodium azide. Sodium azide is highly toxic.
<b>Storage condition :</b>	Store the antibody at 4°C, stable for 6 months. For long-term storage, store at -20°C. Avoid repeated freeze and thaw cycles.

### Application Note

Western blot analysis: 2-4  $\mu$ g/ml

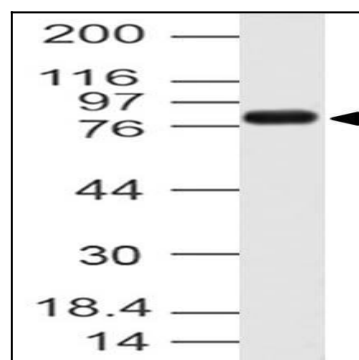


Fig-1: Western blot analysis of Cactin. Anti-Cactin antibody (11-3026) was used at 4  $\mu$ g/ml on HCT-116 lysate.