

## 11-8085: Polyclonal Antibody to Grb2-associated binder 1

<b>Clonality :</b>	Polyclonal
<b>Application :</b>	WB
<b>Reactivity :</b>	Human
<b>Gene :</b>	GAB1
<b>Gene ID :</b>	2549
<b>Uniprot ID :</b>	Q13480
<b>Format :</b>	Purified
<b>Alternative Name :</b>	GAB1
<b>Isotype :</b>	Rabbit IgG
<b>Immunogen Information :</b>	A partial length recombinant Grb2-associated binder 1 protein (amino acids 110-320) was used as the immunogen for this antibody.

### Description

GAB1 (GRB2-associated-binding protein 1) belongs to the scaffolding adaptor protein family. GAB1 has an N-terminal pleckstrin homology domain, as well as multiple tyrosine-based motifs and proline-rich sequences, which are potential binding sites for various Src homology 2 (SH2) domains and Src homology 3 domains, respectively. It is required for fibroblast cell survival and maintaining cardiac function. It is expressed in myocardial tissue in acyanotic and cyanotic children with congenital heart defects (26090437). GAB1 is an important docking protein responsible for intracellular signaling assembly and transduction. It is involved in proliferation and apoptosis in human chondrosarcoma (CS). It plays a role in FGFR1 signaling and involved in signaling by the epidermal growth factor receptor (EGFR) and the insulin receptor (INSR).

### Product Info

<b>Amount :</b>	25 µg / 100 µg
<b>Purification :</b>	Protein A Chromatography
<b>Content :</b>	25 µg in 50 µl/100 µg in 200 µl PBS containing 0.05% BSA and 0.05% sodium azide. Sodium azide is highly toxic.
<b>Storage condition :</b>	Store the antibody at 4°C, stable for 6 months. For long-term storage, store at -20°C. Avoid repeated freeze and thaw cycles.

### Application Note

Western blot analysis: 2-4 µg/ml

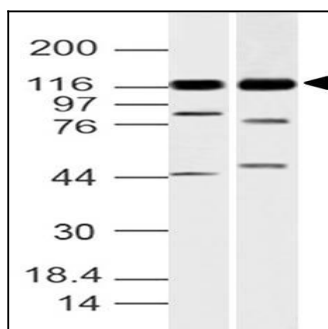


Fig-1: Western blot analysis of Grb2-associated binder 1. Anti-Grb2-associated binder 1 antibody (11-8085) was used at 4 µg/ml on (1) A431 and (2) K562 lysates.