

## 11-8066: Polyclonal Antibody to ASAP3

<b>Clonality :</b>	Polyclonal
<b>Application :</b>	WB
<b>Reactivity :</b>	Human
<b>Gene :</b>	ASAP3
<b>Gene ID :</b>	55616
<b>Uniprot ID :</b>	Q8TDY4
<b>Format :</b>	Purified
<b>Alternative Name :</b>	ASAP3,DDEFL1,UPLC1
<b>Isotype :</b>	Rabbit IgG
<b>Immunogen Information :</b>	A partial length recombinant ASAP3 protein (amino acids 550-800) was used as the immunogen for this antibody.

### Description

ASAP3 belongs to Arf-specific GTPase-activating proteins which regulate Arfs by stimulating their intrinsic GTP hydrolysis. This protein contains a catalytic core of a PH (Pleckstrin Homology) domain, a GAP motif, and two ANK (Ankyrin) repeats. ASAP3 also associates with focal adhesions and with cytoplasmic membranes at the circular dorsal ruffles, where the actin skeleton is remodeled. Depletion of ASAP3 by RNA interference suppresses cell migration in wound healing.

### Product Info

<b>Amount :</b>	25 µg / 100 µg
<b>Purification :</b>	Protein A Chromatography
<b>Content :</b>	25 µg in 50 µl/100 µg in 200 µl PBS containing 0.05% BSA and 0.05% sodium azide. Sodium azide is highly toxic.
<b>Storage condition :</b>	Store the antibody at 4°C, stable for 6 months. For long-term storage, store at -20°C. Avoid repeated freeze and thaw cycles.

### Application Note

Western blot analysis: 2-4 µg/ml

This antibody detects ~43 kDa band. The size corresponds to Isoform 2 (Uniprot ID-Q8TDY4-2) of ASAP3, the right size is ~99 kDa.

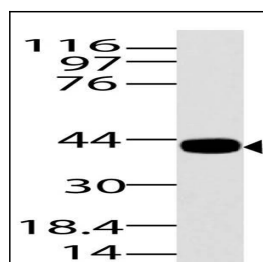


Fig-1: Western blot analysis of ASAP3. Anti-ASAP3 antibody (11-8066) was used at 4 µg/ml on Pancrease lysate.