

11-8068: Polyclonal Antibody to ASAP2

Clonality :	Polyclonal
Application :	WB
Reactivity :	Human
Gene :	ASAP2
Gene ID :	8853
Uniprot ID :	O43150
Format :	Purified
Alternative Name :	ASAP2,DDEF2,KIAA0400
Isotype :	Rabbit IgG
Immunogen Information :	A partial length recombinant ASAP2 protein (amino acids 500-760) was used as the immunogen for this antibody.

Description

ASAP2 (Arf-GAP with SH3 domain, ANK repeat and PH domain-containing protein 2) or Development and differentiation-enhancing factor 2 (DDEF2) or Paxillin-associated protein with ARF GAP activity 3 (PAG3) is a multidomain protein containing two ANK repeats, one Arf-GAP domain, one PH domain and one SH3 domain. ASAP2 has two isoforms: PAPalpha and PAPbeta (111 and 106 kDa respectively) and both the isoforms are generally located in Golgi plasma membrane, where it colocalizes with protein tyrosine kinase 2-beta (PYK2). ASAP2 regulates ARF-mediated vesicle budding when vesicular transport. ASAP2 has high level of expression in brain, kidney, and heart.

Product Info

Amount :	25 µg / 100 µg
Purification :	Protein A Chromatography
Content :	25 µg in 50 µl/100 µg in 200 µl PBS containing 0.05% BSA and 0.05% sodium azide. Sodium azide is highly toxic.
Storage condition :	Store the antibody at 4°C, stable for 6 months. For long-term storage, store at -20°C. Avoid repeated freeze and thaw cycles.

Application Note

Western blot analysis: 2-4 µg/ml

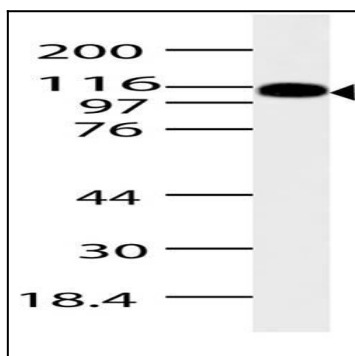


Fig-1: Western blot analysis of ASAP2. Anti-ASAP2 antibody (11-8068) was used at 4 µg/ml on Pancrease lysate.