

## 11-6003: Polyclonal Antibody to CUEDC2

<b>Clonality :</b>	Polyclonal
<b>Application :</b>	WB
<b>Reactivity :</b>	Human
<b>Gene :</b>	CUEDC2
<b>Gene ID :</b>	79004
<b>Uniprot ID :</b>	Q9H467
<b>Format :</b>	Purified
<b>Alternative Name :</b>	CUEDC2,C10orf66,HOYS6
<b>Isotype :</b>	Rabbit IgG
<b>Immunogen Information :</b>	A partial length recombinant CUEDC2 protein (amino acids 100-280) was used as the immunogen for this antibody.

### Description

CUE domain-containing protein 2 commonly known as CUEDC2 is a 32 kDa protein having CUE Domain. It is involved in ubiquitin and proteasome-mediated degradation of progesterone receptor and estrogen receptor. It interacts with PRB isoform of progesterone receptor (PR) and modulates estrogen receptor (ER)-alpha protein stability through the ubiquitin-proteasome pathway. High level expression of CUEDC2 found in breast cancer tissue compared to normal adjacent tissue. It is found that CUEDC2 has some role in regulating IKK dephosphorylation by recruiting PP1.

### Product Info

<b>Amount :</b>	25 µg / 100 µg
<b>Purification :</b>	Protein A Chromatography
<b>Content :</b>	25 µg in 50 µl/100 µg in 200 µl PBS containing 0.05% BSA and 0.05% sodium azide. Sodium azide is highly toxic.
<b>Storage condition :</b>	Store the antibody at 4°C, stable for 6 months. For long-term storage, store at -20°C. Avoid repeated freeze and thaw cycles.

### Application Note

Western blot analysis: 1-2 Åµg/ml

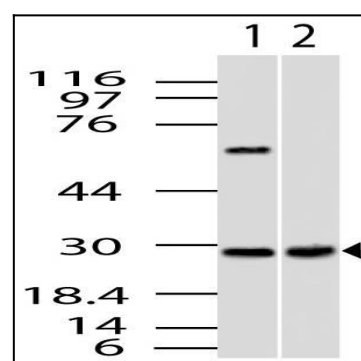


Fig-1: Western blot analysis of CUEDC2. Anti-CUEDC2 antibody (11-6003) was used at 2 µg/ml on 1) Y79, 2) Kidney lysates.