

11-4011: Polyclonal Antibody to Als2Cr2

Clonality :	Polyclonal
Application :	WB
Reactivity :	Human
Gene :	STRADB
Gene ID :	55437
Uniprot ID :	Q9C0K7
Format :	Purified
Alternative Name :	STRADB,ALS2CR2,ILPIP,PRO1038
Isotype :	Rabbit IgG
Immunogen Information :	A partial length recombinant Als2Cr2 protein (amino acids 150-415) was used as the immunogen for this antibody.

Description

Als2Cr2, also named as STE20-related kinase adapter protein beta is an enzyme that in humans encoded by the STRADB gene belongs to the serine/threonine protein kinase STE20 subfamily. Als2Cr2 interacts with CAB39/MO25 (CAB39/MO25alpha or CAB39L/MO25beta) in order to activate STK11/LKB1. Als2Cr2 is associated with diseases like amyotrophic lateral sclerosis, and lateral sclerosis. Als2Cr2 is highly expressed in heart, skeletal muscle, testis, liver and colon. It has three isoforms.

Product Info

Amount :	25 µg / 100 µg
Purification :	Protein A Chromatography
Content :	25 µg in 50 µl/100 µg in 200 µl PBS containing 0.05% BSA and 0.05% sodium azide. Sodium azide is highly toxic.
Storage condition :	Store the antibody at 4°C, stable for 6 months. For long-term storage, store at -20°C. Avoid repeated freeze and thaw cycles.

Application Note

Western blot analysis: 6-7 µg/ml

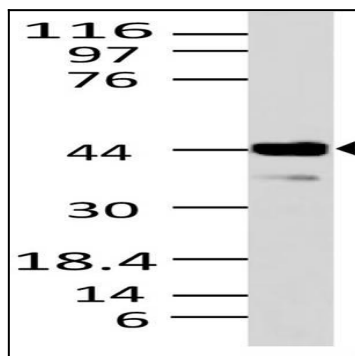


Fig-1: Western blot analysis of Als2Cr2. Anti-Als2Cr2 antibody (11-4011) was used at 6 µg/ml on Heart lysate.