

## 11-4025: Polyclonal Antibody to S1PR1

<b>Clonality :</b>	Polyclonal
<b>Application :</b>	WB
<b>Reactivity :</b>	Human
<b>Gene :</b>	S1PR1
<b>Gene ID :</b>	1901
<b>Uniprot ID :</b>	P21453
<b>Format :</b>	Purified
<b>Alternative Name :</b>	S1PR1,CHEDG1,EDG1
<b>Isotype :</b>	Rabbit IgG
<b>Immunogen Information :</b>	A partial length recombinant S1PR1 protein (amino acids 1-320) was used as the immunogen for this antibody.

### Description

Sphingosine-1-phosphate receptor 1 (S1P receptor 1 or S1P1), also known as endothelial differentiation gene 1 (EDG1) is a protein that in humans is encoded by the S1PR1 gene. S1PR1 plays an important role in cell migration reorganizing the actin cytoskeleton and by the formation of lamellipodia in response to the activity of sphingosine kinase SPHK1. Diseases associated with S1PR1 include follicular thyroid carcinoma and multiple sclerosis. It is mainly expressed on endothelial cells, vascular smooth muscle cells (low), fibroblasts, melanocytes and cells of epithelioid origin.

### Product Info

<b>Amount :</b>	25 µg / 100 µg
<b>Purification :</b>	Protein A Chromatography
<b>Content :</b>	25 µg in 50 µl/100 µg in 200 µl PBS containing 0.05% BSA and 0.05% sodium azide. Sodium azide is highly toxic.
<b>Storage condition :</b>	Store the antibody at 4°C, stable for 6 months. For long-term storage, store at -20°C. Avoid repeated freeze and thaw cycles.

### Application Note

Western blot analysis: 4-6 µg/ml

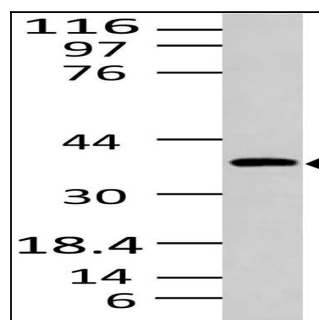


Fig-1: Western blot analysis of S1PR1 . Anti-S1PR1 antibody (11-4025) was used at 4 µg/ml on A375 lysate.