

## 11-3020: Polyclonal Antibody to TRIL

<b>Clonality :</b>	Polyclonal
<b>Application :</b>	WB
<b>Reactivity :</b>	Human
<b>Gene :</b>	TRIL
<b>Gene ID :</b>	9865
<b>Uniprot ID :</b>	Q7L0X0
<b>Format :</b>	Purified
<b>Alternative Name :</b>	TRIL,KIAA0644
<b>Isotype :</b>	Rabbit IgG
<b>Immunogen Information :</b>	A partial length recombinant TRIL protein (amino acids 600-811) was used as the immunogen for this antibody.

### Description

TRIL is a component of the TLR4 (MIM 603030) complex and is induced in a number of cell types by lipopolysaccharide (LPS). TRIL (TLR4 interactor with leucine-rich repeats) is a component of the TLR4 signaling complex which mediate the innate immune response to bacterial lipopolysaccharide (LPS) leading to cytokine secretion. TRIL interacts with TLR4 which is enhanced by LPS stimulation. TRIL is expressed mostly in adipose tissue, adrenal cortex, adrenal gland, etc.

### Product Info

<b>Amount :</b>	25 $\mu$ g / 100 $\mu$ g
<b>Purification :</b>	Protein A Chromatography
<b>Content :</b>	25 $\mu$ g in 50 $\mu$ l/100 $\mu$ g in 200 $\mu$ l PBS containing 0.05% BSA and 0.05% sodium azide. Sodium azide is highly toxic.
<b>Storage condition :</b>	Store the antibody at 4°C, stable for 6 months. For long-term storage, store at -20°C. Avoid repeated freeze and thaw cycles.

### Application Note

Western blot analysis: 2-4  $\mu$ g/ml

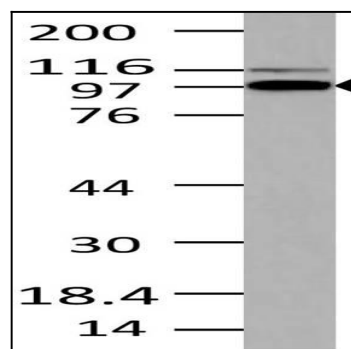


Fig-1: Western blot analysis of TRIL . Anti-TRIL antibody (11-3020) was used at 4  $\mu$ g/ml on Raji lysate.