

11-1020: Polyclonal Antibody to 14-3-3 sigma

Clonality :	Polyclonal
Application :	IHC,WB
Reactivity :	Human
Gene :	SFN
Gene ID :	2810
Uniprot ID :	P31947
Format :	Purified
Alternative Name :	SFN,HME1
Isotype :	Rabbit IgG
Immunogen Information :	Full length recombinant 14-3-3 sigma protein was used as the immunogen for this antibody.

Description

14-3-3 sigma is a member of a highly conserved family of 14-3-3 proteins that are present in all eukaryotic organisms. There are 7 known human 14-3-3 isotypes and they play important roles in many biological activities by binding to and altering the subcellular localization and/or stability of key molecules in various signaling cascades. 14-3-3 sigma was originally characterized as a human mammary epithelium marker 1 and later rediscovered as an important molecule for cell cycle checkpoint regulation. Recently it has been reported that 14-3-3 sigma may serve as a prognosis marker predicting survival of pancreatic cancer patient treatment. 14-3-3 Sigma is the only 14-3-3 isoform induced by the tumor suppressor protein p53, in response to Gamma-irradiation and other DNA-damaging agents. 14-3-3 sigma is a p53-regulated inhibitor of G2/M progression and acts as a tumor suppressor gene that is inactivated by methylation of its 5' CpG islands in epithelial tumor cells. Two isoforms of the human proteins are produced by alternative splicing.

Product Info

Amount :	25 µg / 100 µg
Purification :	Protein A Chromatography
Content :	25 µg in 50 µl/100 µg in 200 µl PBS containing 0.05% BSA and 0.05% sodium azide. Sodium azide is highly toxic.
Storage condition :	Store the antibody at 4°C, stable for 6 months. For long-term storage, store at -20°C. Avoid repeated freeze and thaw cycles.

Application Note

Western blot analysis: 1-3 µg/ml, Immunohistochemical analysis: 10 µg/ml

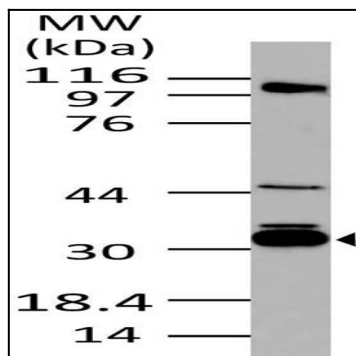


Fig-1: Western blot analysis of 14-3-3 sigma . Anti- 14-3-3 sigma antibody (11-1020) was used at 1 μ g/ml on Molt-4 lysate.

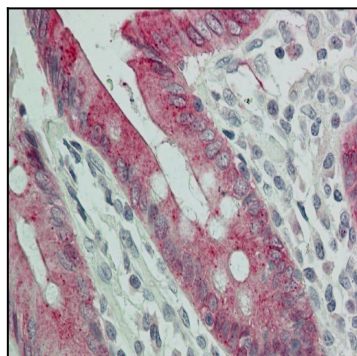


Fig-2: Immunohistochemical analysis of 14-3-3 sigma. Anti-14-3-3 sigma antibody (11-1020) in human Colon tissue at 10 μ g/ml.

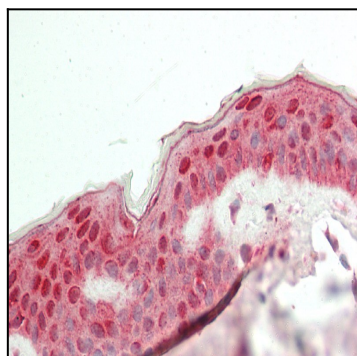


Fig-3 : Immunohistochemical analysis of 14-3-3 sigma. Anti-14-3-3 sigma antibody (11-1020) in human Skin tissue at 10 μ g/ml.