

## 11-8005: Polyclonal Antibody to PACS-1

<b>Clonality :</b>	Polyclonal
<b>Application :</b>	WB
<b>Reactivity :</b>	Human
<b>Gene :</b>	PACS1
<b>Gene ID :</b>	55690
<b>Uniprot ID :</b>	Q6VY07
<b>Format :</b>	Purified
<b>Alternative Name :</b>	PACS1,KIAA1175
<b>Isotype :</b>	Rabbit IgG
<b>Immunogen Information :</b>	A partial length recombinant PACS-1 protein (amino acids 150-400) was used as the immunogen for this antibody.

### Description

PACS1 or phosphofurin acidic cluster sorting protein 1 belongs to the PACS family of proteins and is involved in protein trafficking. PACS1 contains an acidic cluster sorting motifs and plays an important role in the localization of trans-Golgi network (TGN) membrane proteins. It has also been implicated in secretory granule biogenesis. In order to enable HIV-1 to escape immune surveillance, PACS-1 is also reported to be involved in HIV-1 Nef-mediated removal of MHC-I from the cell surface to the trans-golgi network. Diseases caused by mutation in this gene include mental retardation (MRD17) and AIDS. PACS1 has expression in adipose tissue, liver, spleen, bone, blood, brain. It has 2 isoforms produced by alternative splicing.

### Product Info

<b>Amount :</b>	25 µg / 100 µg
<b>Purification :</b>	Protein A Chromatography
<b>Content :</b>	25 µg in 50 µl/100 µg in 200 µl PBS containing 0.05% BSA and 0.05% sodium azide. Sodium azide is highly toxic.
<b>Storage condition :</b>	Store the antibody at 4°C, stable for 6 months. For long-term storage, store at -20°C. Avoid repeated freeze and thaw cycles.

### Application Note

Western blot analysis: 1-3 Åµg/ml

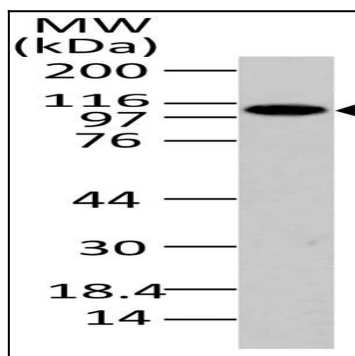


Fig-1: Western blot analysis of PACS-1. Anti- PACS-1 antibody (11-8005) was used at 1 µg/ml on Raji lysate.