

11-8018: Polyclonal Antibody to LST8/GBL

| | |
|--------------------------------|--|
| Clonality : | Polyclonal |
| Application : | WB |
| Reactivity : | Human |
| Gene : | MLST8 |
| Gene ID : | 64223 |
| Uniprot ID : | Q9BVC4 |
| Format : | Purified |
| Alternative Name : | MLST8,GBL,LST8 |
| Isotype : | Rabbit IgG |
| Immunogen Information : | A partial length recombinant LST8/GBL protein (amino acids 100-320) was used as the immunogen for this antibody. |

Description

MLST8 or GbL (G protein beta protein subunit-like) is a subunit of mTORC1 and mTORC2 which regulates cell growth and survival. Both mTORC1 and 2 are activated in response to growth factors or amino acids but mTORC2 is most likely insensitive towards nutrients. Within mTORC1, LST8 interacts directly with mTOR and helps to enhance its kinase activity. mTORC1 phosphorylates EIF4EBP1 and thereby releasing it from inhibiting the elongation initiation factor 4E (eIF4E). mTORC2 promotes the serum-induced formation of stress-fibers or F-actin. LST8/GBL more or less ubiquitously expressed with highest levels in skeletal muscle, heart and kidney.

Product Info

| | |
|----------------------------|---|
| Amount : | 25 µg / 100 µg |
| Purification : | Protein A Chromatography |
| Content : | 25 µg in 50 µl/100 µg in 200 µl PBS containing 0.05% BSA and 0.05% sodium azide. Sodium azide is highly toxic. |
| Storage condition : | Store the antibody at 4°C, stable for 6 months. For long-term storage, store at -20°C. Avoid repeated freeze and thaw cycles. |

Application Note

Western blot analysis: 1-3 Åµg/ml.

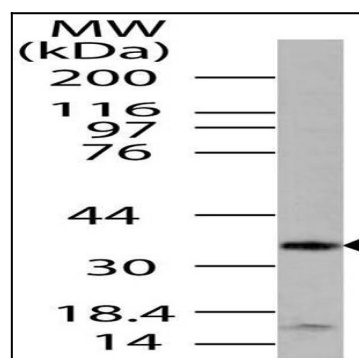


Fig-1: Western blot analysis of LST8/GBL. Anti-LST8/GBL (11-8018) was used at 1 µg/ml on Kidney lysate.