

## 11-8014: Polyclonal Antibody to Exportin-4

<b>Clonality :</b>	Polyclonal
<b>Application :</b>	WB
<b>Reactivity :</b>	Human
<b>Gene :</b>	XPO4
<b>Gene ID :</b>	64328
<b>Uniprot ID :</b>	Q9C0E2
<b>Format :</b>	Purified
<b>Alternative Name :</b>	XPO4,KIAA1721
<b>Isotype :</b>	Rabbit IgG
<b>Immunogen Information :</b>	A partial length recombinant Exportin-4 protein (amino acids 775-1,000) was used as the immunogen for this antibody.

### Description

Exportin-4 or XPO4 belongs to a large family of nucleoproteins that mediate the transport of proteins and other cargo between the nuclear and cytoplasmic compartments. Exportin-4 is a RanGTP-binding protein and functions as a receptor for nuclear export of EIF-5A and also may have a role as an adapter in RNA export. Exportin-4 has been reported to be involved in nuclear export of Smad3 and thereby regulation of Smad signaling. Diseases associated with XPO4 include pinguecula. This protein has ubiquitously expressed.

### Product Info

<b>Amount :</b>	25 µg / 100 µg
<b>Purification :</b>	Protein A Chromatography
<b>Content :</b>	25 µg in 50 µl/100 µg in 200 µl PBS containing 0.05% BSA and 0.05% sodium azide. Sodium azide is highly toxic.
<b>Storage condition :</b>	Store the antibody at 4°C, stable for 6 months. For long-term storage, store at -20°C. Avoid repeated freeze and thaw cycles.

### Application Note

Western blot analysis: 1-3 Åµg/ml

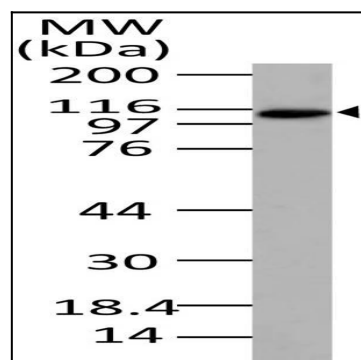


Fig-1: Western blot analysis of Exportin-4. Anti- Exportin-4 antibody (11-8014) was used at 1 µg/ml on Heart lysate.