

11-7004: Polyclonal Antibody to LSD1

| | |
|--------------------------------|---|
| Clonality : | Polyclonal |
| Application : | IHC,WB |
| Reactivity : | Mouse,Human |
| Gene : | KDM1A |
| Gene ID : | 23028 |
| Uniprot ID : | O60341 |
| Format : | Purified |
| Alternative Name : | KDM1A,AOF2,KDM1,KIAA0601,LSD1 |
| Isotype : | Rabbit IgG |
| Immunogen Information : | A partial length recombinant LSD1 protein (amino acids 97-328) was used as the immunogen for this antibody. |

Description

LSD1 or KDM1A (lysine (K)-specific demethylase 1A) gene encodes a nuclear protein which contains a SWIRM domain, a FAD-binding motif, and an amine oxidase domain. This protein is a component of several histone deacetylase complexes. LSD1 or KDM1A is a demethylase that acts on both Lys 4 and 9 of histone H3. Consequently depending upon the use it may act as a co-activator or a co-repressor. It may have a role in the repression of neuronal genes. Two isoforms of LSD1 have been reported which are produced by alternative splicing. LSD1 has more or less ubiquitous expression.

Product Info

| | |
|----------------------------|---|
| Amount : | 25 µg / 100 µg |
| Purification : | Protein A Chromatography |
| Content : | 25 µg in 50 µl/100 µg in 200 µl PBS containing 0.05% BSA and 0.05% sodium azide. Sodium azide is highly toxic. |
| Storage condition : | Store the antibody at 4°C, stable for 6 months. For long-term storage, store at -20°C. Avoid repeated freeze and thaw cycles. |

Application Note

Western blot analysis: 0.5-2.0 µg/ml, Immunohistochemical analysis: 5 µg/ml

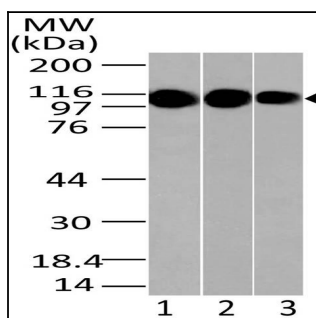


Fig-1: Western blot analysis of LSD1. Anti- LSD1 antibody (11-7004) was used at 0.5 µg/ml on 1) 293, 2) MCF-7 and 3) 3T3 lysates.

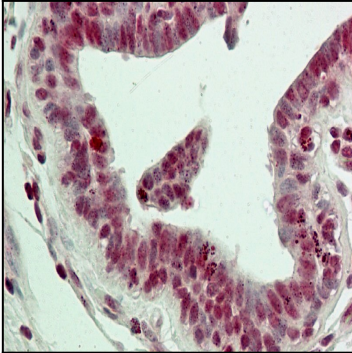


Fig-2: Immunohistochemical analysis of LSD1. Anti-LSD1 antibody (11-7004) in human Breast tissue at 5 $\mu\text{g/ml}$.

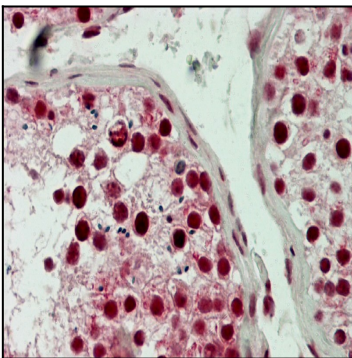


Fig-3: Immunohistochemical analysis of LSD1. Anti-LSD1 antibody (11-7004) in human Testis tissue at 5 $\mu\text{g/ml}$.