

## 11-8023: Polyclonal Antibody to CRHR2

<b>Clonality :</b>	Polyclonal
<b>Application :</b>	WB
<b>Reactivity :</b>	Human
<b>Gene :</b>	CRHR2
<b>Gene ID :</b>	1395
<b>Uniprot ID :</b>	Q13324
<b>Format :</b>	Purified
<b>Alternative Name :</b>	CRHR2,CRF2R,CRH2R
<b>Isotype :</b>	Rabbit IgG
<b>Immunogen Information :</b>	A partial length recombinant CRHR2 protein (amino acids 1-200) was used as the immunogen for this antibody.

### Description

CRHR2 (CRF2R, CRH2R) (corticotropin releasing hormone receptor 2) belongs to the G-protein coupled receptor 2 family. This receptor has high affinity for corticotropin releasing hormone (CRH) and may also bind to CRH-related peptides, such as, urocortin. The human CRHR2 gene contains 12 exons. Three major functional isoforms have been reported: alpha, beta and gamma encoded by transcripts with alternative first exons which differ from each other by signal sequence and extra-cellular domain. CRH is synthesized in the hypothalamus and plays an important role in coordinating the endocrine, autonomic and behavioral responses to stress and immune challenge. CRHR2 has high expression in brain, caudate nucleus, cerebrum, colon, endometrium, etc.

### Product Info

<b>Amount :</b>	25 µg / 100 µg
<b>Purification :</b>	Protein A Chromatography
<b>Content :</b>	25 µg in 50 µl/100 µg in 200 µl PBS containing 0.05% BSA and 0.05% sodium azide. Sodium azide is highly toxic.
<b>Storage condition :</b>	Store the antibody at 4°C, stable for 6 months. For long-term storage, store at -20°C. Avoid repeated freeze and thaw cycles.

### Application Note

Western blot analysis: 0.5-2.0 µg/ml

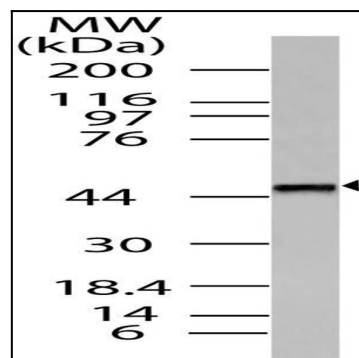


Fig-1: Western blot analysis of CRHR2. Anti- CRHR2 antibody (11-8023) was used at 0.5 µg/ml on T98G lysate.