

11-1005: Polyclonal Antibody to APG4B

Clonality :	Polyclonal
Application :	WB
Reactivity :	Human
Gene :	ATG4B
Gene ID :	23192
Uniprot ID :	Q9Y4P1
Format :	Purified
Alternative Name :	ATG4B,APG4B,AUTL1,KIAA0943
Isotype :	Rabbit IgG
Immunogen Information :	A partial length recombinant APG4B protein (amino acids 150-393) was used as the immunogen for this antibody.

Description

APG4B (autophagy related 4B, cysteine peptidase) belongs to autophagin protein family. APG4B splits the C-terminal amino acid of ATG8 family proteins, MAP1LC3, GABARAPL1, GABARAPL2 and GABARAP, to reveal a C-terminal glycine. It has 393 aminoacids residues. It has 5 isoforms produced by alternative transcriptional splicing. APG4B is mainly expressed in the skeletal muscle, brain, heart, liver and pancreas. It is a Cysteine protease needed for the cytoplasm to vacuole transport (Cvt) and autophagy. APG4B mainly expressed in the skeletal muscle, followed by brain, heart, liver and pancreas.

Product Info

Amount :	25 µg / 100 µg
Purification :	Protein A Chromatography
Content :	25 µg in 50 µl/100 µg in 200 µl PBS containing 0.05% BSA and 0.05% sodium azide. Sodium azide is highly toxic.
Storage condition :	Store the antibody at 4°C, stable for 6 months. For long-term storage, store at -20°C. Avoid repeated freeze and thaw cycles.

Application Note

Western blot analysis: 4-6 Åµg/ml

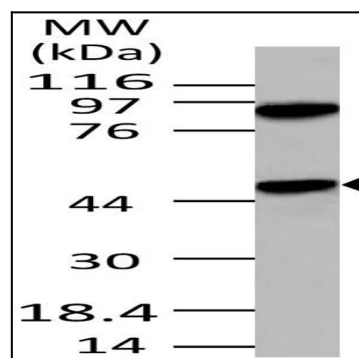


Fig-1: Western blot analysis of APG4B. Anti- APG4B antibody (11-1005) was used at 4 µg/ml on 293 lysate.