

35-1292: Smad3 (Phospho-Ser425) Antibody

Clonality :	Polyclonal
Application :	IHC,WB
Reactivity :	Rat,Mouse,Human
Gene :	SMAD3
Gene ID :	4088
Uniprot ID :	P84022
Alternative Name :	JV15-2; MAD-3; MADH3; Mad3; Mothers against DPP homolog 3
Immunogen Information :	Peptide sequence around phosphorylation site of serine 425 (C-S-S-V-S(p)) derived from Human Smad3.

Description

Smad3 encoded by this gene belongs to the SMAD, a family of proteins similar to the gene products of the Drosophila gene 'mothers against decapentaplegic' (Mad) and the C. elegans gene Sma. SMAD proteins are signal transducers and transcriptional modulators that mediate multiple signaling pathways. This protein functions as a transcriptional modulator activated by transforming growth factor-beta and is thought to play a role in the regulation of carcinogenesis.

Modification: Phospho-Tyr1197

Product Info

Amount :	50 µl / 100 µl
Purification :	Affinity-chromatography
Content :	Supplied at 1.0mg/mL in phosphate buffered saline (without Mg ²⁺ and Ca ²⁺), pH 7.4, 150mM NaCl, 0.02% sodium azide and 50% glycerol.
Storage condition :	Store at 4°C; For long-term storage; store at -20°C. Avoid repeated freeze and thaw cycles.

Application Note

Predicted MW: 52kd, Western blotting: 1:500~1:1000, Immunohistochemistry: 1:50~1:100

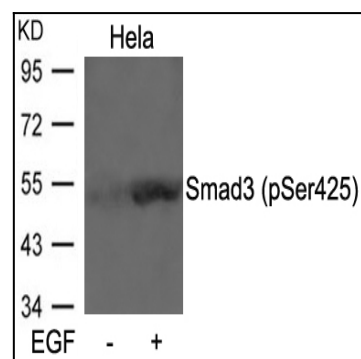


Figure 1: Western blot analysis of extracts from HeLa cells untreated or treated with EGF using Smad3(Phospho-Ser425) Antibody 35-1292 .

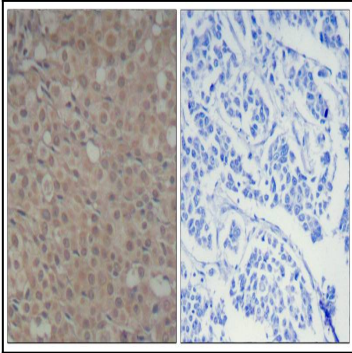


Figure 2: Immunohistochemical analysis of paraffin-embedded human breast carcinoma tissue using Smad3(Phospho-Ser425) Antibody 35-1292 (left) or the same antibody preincubated with blocking peptide(right).