

10-3026-P: Monoclonal Antibody to TLR2 (Clone: ABM3A87) PE conjugated

| | |
|--------------------------------|--|
| Clonality : | Monoclonal |
| Clone Name : | ABM3A87 |
| Application : | FACS |
| Reactivity : | Mouse,Human |
| Conjugate : | PE |
| Gene : | TLR2 |
| Gene ID : | 7097 |
| Uniprot ID : | O60603 |
| Format : | Purified |
| Alternative Name : | TLR2,TIL4 |
| Isotype : | Mouse IgG1 Kappa |
| Immunogen Information : | A partial length recombinant TLR2 protein (amino acids 180-420) was used as the immunogen for this antibody. |

Description

TLR2 (Toll-Like Receptors 2) is a member of the TLR (Toll-like receptor) family that plays a fundamental role in pathogen recognition and activation of innate immunity. TLR2 forms heterodimers with TLR1 and TLR6, which is the initial step in a cascade of events leading to significant innate immune responses, development of adaptive immunity to pathogens and protection from immune sequelae related to infection with these pathogens. TLR2 also interacts with a large number of non-TLR molecules, allowing for recognition of a great number and variety of PAMPs (pathogen-associated molecular patterns). TLR2 expression has been detected in immune cells, endothelial, and epithelial cells.

Product Info

| | |
|----------------------------|---|
| Amount : | 25 Test / 100 Test |
| Purification : | Protein G Chromatography |
| Content : | 0.04 mg/ml in PBS with 0.05% Azide. |
| Storage condition : | Store the antibody at 4°C, stable for 6 months. |

Application Note

FACS analysis: 0.5 -1 $\mu\text{g}/10^6$ cells

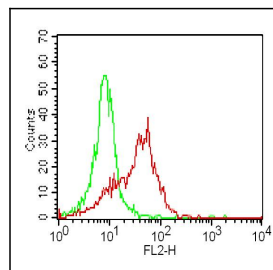


Fig-1: Intracellular flow analysis of TLR2 PE conjugated in PBMC (Monocytes) using 0.5 $\mu\text{g}/10^6$ cells of TLR2 PE conjugated antibody (Clone: ABM3A87). Green represents isotype control; red represents anti-TLR2 PE conjugated antibody.