

10-3002-F: Monoclonal Antibody to TLR6 (Clone: ABM1B50)-FITC Conjugated

Clonality :	Monoclonal
Clone Name :	ABM1B50
Application :	FACS
Reactivity :	Human
Conjugate :	FITC
Gene :	TLR6
Gene ID :	10333
Uniprot ID :	Q9Y2C9
Format :	Purified
Alternative Name :	TLR6
Isotype :	Mouse IgG1 Kappa
Immunogen Information :	A partial length recombinant TLR6 protein (amino acids 280-512) was used as the immunogen for this antibody.

Description

TLR6 (Toll-Like Receptors 6) is a member of the TLR (Toll-like receptor) family that plays a fundamental role in pathogen recognition and activation of innate immunity. TLR6 forms heterodimers with TLR1 and TLR2, which is the initial step in a cascade of events leading to significant innate immune responses, development of adaptive immunity to pathogens and protection from immune sequelae related to infection with these pathogens. TLR2 in co-operation with TLR6 trigger inflammatory responses via activation of NF-kappaB, which regulates the transcription of inflammatory molecules. TLR6 has emerged as the most potent activator for ZNPs (Zinc Oxide Nanoparticles)-induced inflammatory responses. Upon silencing, TLR6 significantly inhibited the pro-inflammatory cytokine levels, reactive nitrogen species generation and inducible nitric oxide synthase expression.

Product Info

Amount :	25 µg / 100 µg
Purification :	Protein G Chromatography
Content :	0.2 mg/ml in Tris buffer containing 0.05% Azide
Storage condition :	Store the antibody at 4°C, stable for 6 months.

Application Note

FACS analysis: 0.5-1 µg/10⁶ cells

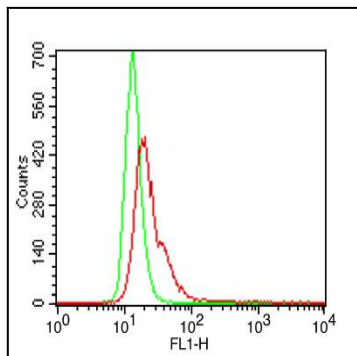


Fig-1: Intracellular flow analysis of hTLR6 FITC conjugated in THP1 using 0.5 $\mu\text{g}/10^6$ cells of hTLR6-FITC conjugated antibody (Clone: ABM1B50). Green represents isotype control and red represent hTLR6-FITC conjugated.

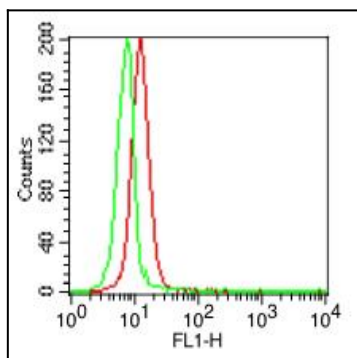


Fig-2: Intracellular flow analysis of hTLR6 FITC conjugated in hPBMC using 0.5 $\mu\text{g}/10^6$ cells of hTLR6-FITC conjugated antibody (Clone: ABM1B50). Green represents isotype control and red represent hTLR6-FITC conjugated.