

10-3026-F: Monoclonal Antibody to TLR2 (Clone: ABM3A87) FITC conjugated

Clonality :	Monoclonal
Clone Name :	ABM3A87
Application :	FACS
Reactivity :	Mouse,Human
Conjugate :	FITC
Gene :	TLR2
Gene ID :	7097
Uniprot ID :	O60603
Format :	Purified
Alternative Name :	TLR2,TIL4
Isotype :	Mouse IgG1 Kappa
Immunogen Information :	A partial length recombinant TLR2 protein (amino acids 180-420) was used as the immunogen for this antibody.

Description

TLR2 (Toll-Like Receptors 2) is a member of the TLR (Toll-like receptor) family that plays a fundamental role in pathogen recognition and activation of innate immunity. TLR2 forms heterodimers with TLR1 and TLR6, which is the initial step in a cascade of events leading to significant innate immune responses, development of adaptive immunity to pathogens and protection from immune sequelae related to infection with these pathogens. TLR2 also interacts with a large number of non-TLR molecules, allowing for recognition of a great number and variety of PAMPs (pathogen-associated molecular patterns). TLR2 expression has been detected in immune cells, endothelial, and epithelial cells.

Product Info

Amount :	25 µg / 100 µg
Purification :	Protein G Chromatography
Content :	0.2 mg/ml in Tris buffer containing 0.05% Azide
Storage condition :	Store the antibody at 4°C, stable for 6 months.

Application Note

FACS analysis: 0.5 -1 µg/10⁶ cells

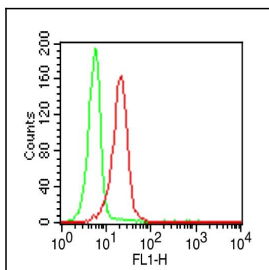


Fig-1: Intracellular flow analysis of TLR2 FITC conjugated in PBMC (Lymphocytes) using 0.5 µg/10⁶ cells of TLR2 FITC conjugated antibody (Clone: ABM3A87). Green represents isotype control; red represents anti-TLR2 FITC conjugated antibody.

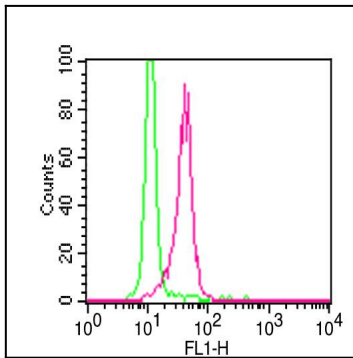


Fig-2: Intracellular flow analysis of TLR2 FITC conjugated in PBMC (Monocytes) using 0.5 $\mu\text{g}/10^6$ cells of TLR2 FITC conjugated antibody (Clone: ABM3A87). Green represents isotype control; red represents anti-TLR2 FITC conjugated antibody.