

10-7593: Monoclonal antibody to NSE Gamma (Clone: ABM5D20)

Clonality :	Monoclonal
Clone Name :	ABM5D20
Application :	WB
Reactivity :	Human
Gene :	ENO2
Gene ID :	2026
Uniprot ID :	P09104
Format :	Purified
Alternative Name :	ENO2, 2-phospho-D-glycerate hydro-lyase, Enolase 2, Neural enolase
Isotype :	Mouse IgG2b Kappa
Immunogen Information :	A partial length recombinant protein from C terminal portion of h NSE Gamma was used as the immunogen for this antibody.

Product Info

Amount :	25 µg / 100 µg
Purification :	Protein G Chromatography
Content :	25 µg in 50 µl/100 µg in 200 µl PBS containing 0.05% BSA and 0.05% sodium azide. Sodium azide is highly toxic.
Storage condition :	Store the antibody at 4°C; stable for 6 months. For long-term storage; store at -20°C. Avoid repeated freeze and thaw cycles.

Application Note

Western blot analysis: 0.5-1 µg/ml

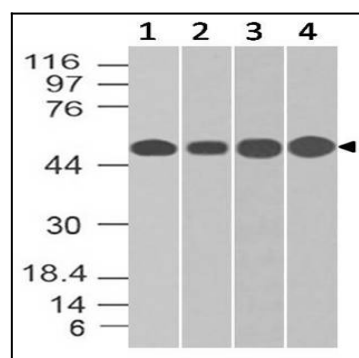


Fig:1- Expression analysis of NSE Gamma. NSE Gamma antibody (Clone: ABM5D20) was tested at 0.5 µg/ml on (1) Jurkat, (2) A431, (3) 293 and (4) U87 lysates.