

## 10-7589: Monoclonal antibody to LAMP1 (Clone: ABM5F15)

<b>Clonality :</b>	Monoclonal
<b>Clone Name :</b>	ABM5F15
<b>Application :</b>	WB,IF
<b>Reactivity :</b>	Human
<b>Gene :</b>	LAMP1
<b>Gene ID :</b>	3916
<b>Uniprot ID :</b>	P11279
<b>Format :</b>	Purified
<b>Alternative Name :</b>	LAMP1
<b>Isotype :</b>	Mouse IgG2b Kappa
<b>Immunogen Information :</b>	A partial length recombinant protein from C terminal portion of LAMP1 was used as the immunogen for this antibody.

### Product Info

<b>Amount :</b>	25 µg / 100 µg
<b>Purification :</b>	Protein G Chromatography
<b>Content :</b>	25 µg in 50 µl/100 µg in 200 µl PBS containing 0.05% BSA and 0.05% sodium azide. Sodium azide is highly toxic.
<b>Storage condition :</b>	Store the antibody at 4°C; stable for 6 months. For long-term storage; store at -20°C. Avoid repeated freeze and thaw cycles.

### Application Note

Western blot analysis: 2-4 µg/ml

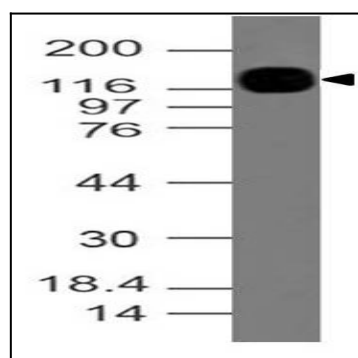


Fig:1- Expression analysis of LAMP1. Anti- LAMP1 antibody (Clone: ABM5F15) was tested at 2 µg/ml on U937 lysate.