

10-7579: Monoclonal antibody to Alpha 1 Antitrypsin (Clone: ABM48F6)

Clonality :	Monoclonal
Clone Name :	ABM48F6
Application :	WB
Reactivity :	Human
Gene :	SERPINA1
Gene ID :	5265
Uniprot ID :	P01009
Format :	Purified
Alternative Name :	SERPINA1,AAT,PI,PRO0684,PRO2209
Isotype :	Mouse IgG2a Kappa
Immunogen Information :	A partial length recombinant human Antitrypsin protein (amino acids 62-283) was used as the immunogen for this antibody.

Product Info

Amount :	25 µg / 100 µg
Purification :	Protein G Chromatography
Content :	25 µg in 50 µl/100 µg in 200 µl PBS containing 0.05% BSA and 0.05% sodium azide. Sodium azide is highly toxic.
Storage condition :	Store the antibody at 4°C; stable for 6 months. For long-term storage; store at -20°C. Avoid repeated freeze and thaw cycles.

Application Note

Western blot analysis: 1-2 µg/ml

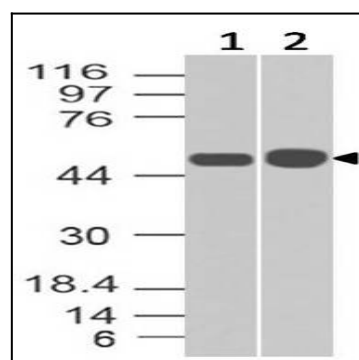


Figure-1: Expression analysis of Antitrypsin. Antitrypsin antibody (Clone: ABM48F6) was tested at 1 µg/ml on (1) Snu1 and (2) HeLa Lysates.