

10-106: Rat IgG2a Isotype Control (Clone: 2A3)

Clonality :	Monoclonal
Clone Name :	2A3
Application :	IHC,FACS
Format :	Purified
Isotype :	Rat IgG2a
Immunogen Information :	Trinitrophenol was used as the immunogen for this Isotype control.

Description

A Rat isotype control is an antibody of the same class (isotype) of immunoglobulin as the specific Rat antibody, but is either myeloma-derived antibody of unknown specificity, or is raised against an antigen that is presumed not to be present on or in the cells under study. Isotype control antibodies are used for the estimation of non-specific binding of target primary antibodies to cell surface antigens.

Product Info

Amount :	100 µg
Purification :	Affinity Chromatography
Content :	25 µg in 50 µl/100 µg in 200 µl PBS containing 0.05% BSA and 0.05% sodium azide. Sodium azide is highly toxic.
Storage condition :	Store the antibody at 4°C; stable for 6 months. For long-term storage; store at -20°C. Avoid repeated freeze and thaw cycles.

Application Note

FACS: 0.5-2 µg/10⁶ cells

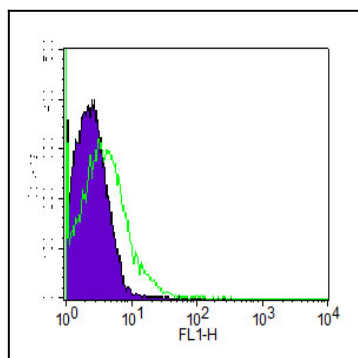


Fig.1: Cell Surface staining of splenocytes using 0.5 µg of Rat IgG2a isotype control. Goat anti-Rat FITC secondary antibody was used. Purple: cells alone, Green: rat IgG2a isotype control (10-106).