

## 10-107: Rat IgG2b Isotype Control (Clone: LTF-2)

|                                |   |
|--------------------------------|---|
| <b>Clonality :</b>             | Monoclonal  |
| <b>Clone Name :</b>            | LTF-2   |
| <b>Application :</b>           | IHC,FACS  |
| <b>Format :</b>                | Purified  |
| <b>Isotype :</b>               | Rat IgG2b   |
| <b>Immunogen Information :</b> | KLH was used as the immunogen for this Isotype control. |

### Description

A Rat isotype control is an antibody of the same class (isotype) of immunoglobulin as the specific Rat antibody, but is either myeloma-derived antibody of unknown specificity, or is raised against an antigen that is presumed not to be present on or in the cells under study. Isotype control antibodies are used for the estimation of non-specific binding of target primary antibodies to cell surface antigens.

### Product Info

|                            |   |
|----------------------------|---|
| <b>Amount :</b>            | 100 µg  |
| <b>Purification :</b>      | Affinity Chromatography   |
| <b>Content :</b>           | 25 µg in 50 µl/100 µg in 200 µl PBS containing 0.05% BSA and 0.05% sodium azide. Sodium azide is highly toxic.                |
| <b>Storage condition :</b> | Store the antibody at 4°C; stable for 6 months. For long-term storage; store at -20°C. Avoid repeated freeze and thaw cycles. |

### Application Note

FACS: 0.5-2 µg/10<sup>6</sup> cells

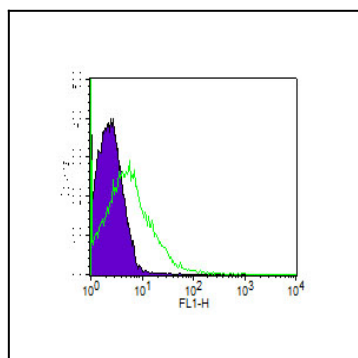


Fig.1: Cell Surface staining of splenocytes using 0.5 µg of Rat IgG2b isotype control. Goat anti-Rat FITC secondary antibody was used. Purple: cells alone, Green: rat IgG2b isotype control (10-107).