

10-106-F: Rat IgG2a Isotype Control (Clone: 2A3)- FITC

Clonality :	Monoclonal
Clone Name :	2A3
Application :	IHC,FACS
Conjugate :	FITC
Format :	Purified
Isotype :	Rat IgG2a
Immunogen Information :	Trinitrophenol was used as the immunogen for this Isotype control.

Description

A Rat isotype control is an antibody of the same class (isotype) of immunoglobulin as the specific Rat antibody, but is either myeloma-derived antibody of unknown specificity, or is raised against an antigen that is presumed not to be present on or in the cells under study. Isotype control antibodies are used for the estimation of non-specific binding of target primary antibodies to cell surface antigens.

Product Info

Amount :	100 µg
Purification :	Affinity Chromatography
Content :	0.2 mg/ml in Tris buffer containing 0.05% Azide
Storage condition :	Store the antibody at 4°C; stable for 6 months.

Application Note

FACS: 0.5-2 µg/10⁶ cells

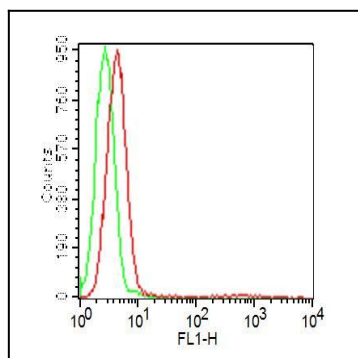


Fig: 1 Cell surface flow analysis of FITC-conjugated Rat IgG2a isotype control in Ramos cell line using 0.5 µg/10⁶ cells (Clone: 2A3). Green represents cell only; red represents Rat IgG2a isotype control conjugated with FITC.