

36-3030: Monoclonal Antibody to HCG beta (Clone: 2C5)(Discontinued)

Clonality :	Monoclonal
Clone Name :	2C5
Application :	IHC
Reactivity :	Human
Gene :	CGB
Gene ID :	1082
Uniprot ID :	P01233
Format :	Purified
Alternative Name :	CGB,CGB3
Isotype :	Mouse IgG1 Kappa
Immunogen Information :	Full-length recombinant hCG-beta protein was used as immunogen.

Description

hCG (Human Chorionic Gonadotropin) is a peptide hormone and a member of the glycoprotein hormone beta chain family and encodes the beta 3 subunit of CG (Chorionic Gonadotropin). This protein plays a major role in pregnancy initiation and progression and is involved in trophoblast differentiation and fusion. After implantation, hCG is the first trophoblast signal detected in the maternal blood and is absolutely necessary for placental development.

Product Info

Amount :	100 µg
Purification :	Protein G Chromatography
Content :	25 µg in 50 µl/100 µg in 200 µl PBS containing 0.05% BSA and 0.05% sodium azide. Sodium azide is highly toxic.
Storage condition :	Store the antibody at 4°C; stable for 6 months. For long-term storage; store at -20°C. Avoid repeated freeze and thaw cycles.

Application Note

Immunohistochemical analysis: 1:200-1:500

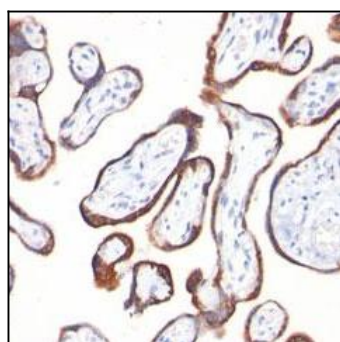


Fig: 1 Immunohistochemical analysis of HCG beta in human placenta using HCG beta antibody (Clone: 2C5) at 1: 200 dilution.