

## 36-3028: Monoclonal Antibody to Estrogen Receptor (Clone: C-70)(Discontinued)

<b>Clonality :</b>	Monoclonal
<b>Clone Name :</b>	C-70
<b>Application :</b>	IHC,WB
<b>Reactivity :</b>	Human
<b>Gene :</b>	ESR1
<b>Gene ID :</b>	2099
<b>Uniprot ID :</b>	P03372
<b>Format :</b>	Purified
<b>Alternative Name :</b>	ESR1,ESR,NR3A1
<b>Isotype :</b>	Mouse IgG1 Kappa
<b>Immunogen Information :</b>	A partial length recombinant human Estrogen Receptor alpha protein (amino acids 2-185) was used as immunogen for this antibody.

### Description

The estrogen receptor (ER) is a ~ 67kDa protein. The estrogen receptor gene consists of more than 140kb of genomic DNA divided into 8 exons, being translated into a protein with six functionally discrete domains, labeled A through F. Normal ER function. Many investigators have reported on the isolation of cDNAs which encode variant ER sequences.

### Product Info

<b>Amount :</b>	100 µg
<b>Purification :</b>	Protein G Chromatography
<b>Content :</b>	25 µg in 50 µl/100 µg in 200 µl PBS containing 0.05% BSA and 0.05% sodium azide. Sodium azide is highly toxic.
<b>Storage condition :</b>	Store the antibody at 4°C; stable for 6 months. For long-term storage; store at -20°C. Avoid repeated freeze and thaw cycles.

### Application Note

Western blot analysis: 2-4 µg/ml; Immunohistochemical analysis: 1:25-1:100

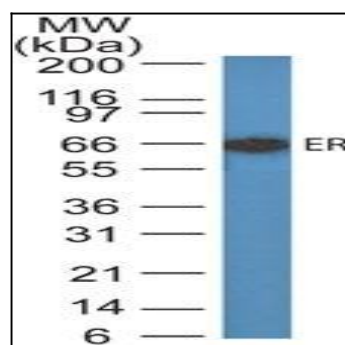


Fig: 1 Western blot analysis of Estrogen Receptor. Anti-ER antibody (Clone: C-70) was used at 2 µg/ml in MCF-7 (human breast cancer) lysate.

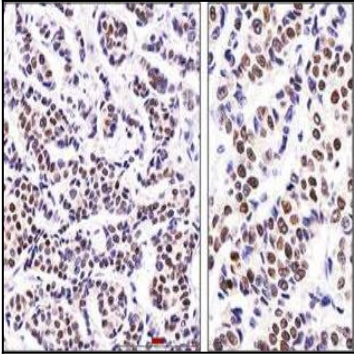


Fig: 2 Immunohistochemical analysis of Estrogen Receptor in human breast invasive ductal carcinoma using Estrogen Receptor antibody (Clone: C-70) at 1: 25 dilution.