

## 10-7526: Monoclonal Antibody to p21 (Clone: WA-1)

<b>Clonality :</b>	Monoclonal
<b>Clone Name :</b>	WA-1
<b>Application :</b>	IHC,WB
<b>Reactivity :</b>	Human
<b>Gene :</b>	CDKN1A
<b>Gene ID :</b>	1026
<b>Uniprot ID :</b>	P38936
<b>Format :</b>	Purified
<b>Alternative Name :</b>	CDKN1A,CAP20,CDKN1,CIP1,MDA6,PIC1,SDI1,WAF1
<b>Isotype :</b>	Mouse IgG1 Kappa
<b>Immunogen Information :</b>	Recombinant human p21 protein was used as immunogen to generate the antibody.

### Description

p21, a member of the cycle dependent kinase (CDK) inhibitor family, was first identified as a tumor suppressor or anti-oncogenic protein and negative regulator of the cell cycle.

### Product Info

<b>Amount :</b>	25 µg / 100 µg
<b>Purification :</b>	Protein G Chromatography
<b>Content :</b>	25 µg in 50 µl/100 µg in 200 µl PBS containing 0.05% BSA and 0.05% sodium azide. Sodium azide is highly toxic.
<b>Storage condition :</b>	Store the antibody at 4°C; stable for 6 months. For long-term storage; store at -20°C. Avoid repeated freeze and thaw cycles.

### Application Note

Immunohistochemical analysis: 1:50-1:100, Western blot analysis: 2-4 µg/ml

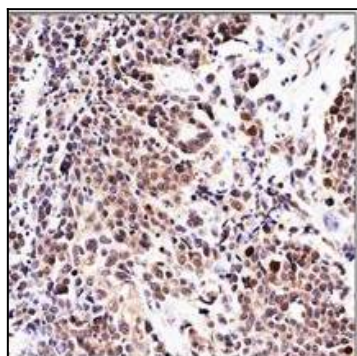


Figure-1: Immunohistochemical analysis of p21 in human urinary transitional cell carcinoma using p21 antibody (Clone: WA-1) at 1: 50 dilution.

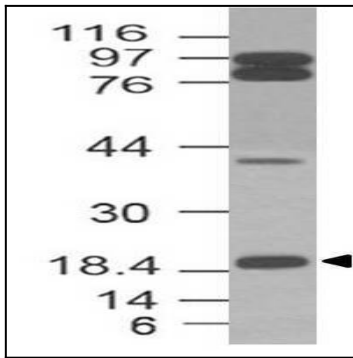


Figure-2: Western blot analysis of p21. Anti-p21 antibody (Clone: WA-1) was used at 2  $\mu$ g/ml in HCT-116 lysate.