

## 11-8015: Polyclonal Antibody to Chaperonin

<b>Clonality :</b>	Polyclonal
<b>Application :</b>	IHC,WB
<b>Reactivity :</b>	Mouse,Human
<b>Gene :</b>	HSPD1
<b>Gene ID :</b>	3329
<b>Uniprot ID :</b>	P10809
<b>Format :</b>	Purified
<b>Alternative Name :</b>	HSPD1,HSP60
<b>Isotype :</b>	Rabbit IgG
<b>Immunogen Information :</b>	A partial length recombinant Chaperonin protein (amino acids 300-570) was used as the immunogen for this antibody.

### Description

HSPD1 (heat shock 60 kDa protein 1 (chaperonin)) is a member of the chaperonin family of proteins. Chaperonin may function as a signaling molecule in the innate immune system and is essential for the folding and assembly of newly imported proteins in the mitochondria implicated in mitochondrial protein import and macromolecular assembly. Diseases associated with HSPD1 include spastic paraplegia 13. It exists in two isoforms comprised of 573 amino acids. Chaperonin is expressed in adipose tissue, adrenal cortex, adrenal gland, blood and brain.

### Product Info

<b>Amount :</b>	25 µg / 100 µg
<b>Purification :</b>	Protein A Chromatography
<b>Content :</b>	25 µg in 50 µl/100 µg in 200 µl PBS containing 0.05% BSA and 0.05% sodium azide. Sodium azide is highly toxic.
<b>Storage condition :</b>	Store the antibody at 4°C, stable for 6 months. For long-term storage, store at -20°C. Avoid repeated freeze and thaw cycles.

### Application Note

Western blot analysis: 1-3 µg/ml, Immunohistochemical analysis: 5 µg/ml

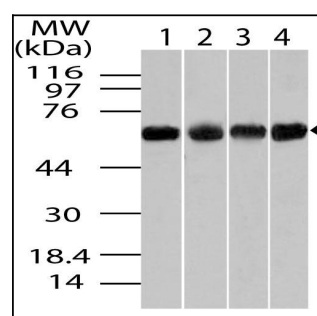


Fig-1: Western blot analysis of Chaperonin . Anti- Chaperonin antibody (11-8015) was used at 1 µg/ml on 1) EL4, 2) A549, 3) A431 and 4) 293 lysates.

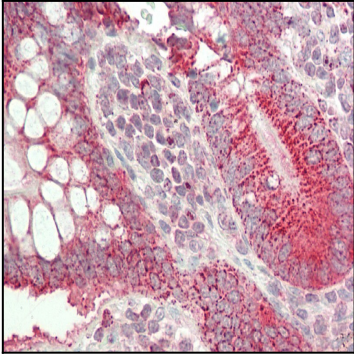


Fig-2: Immunohistochemical analysis of Chaperonin . Anti- Chaperonin antibody (11-8015) in human Small intestine tissue at 5  $\mu$ g/ml.