

**36-11119: Monoclonal Antibody to Ep-CAM / CD326 (Rat) (Epithelial Marker)(Clone : Epcam/1159)**

<b>Clonality :</b>	Monoclonal
<b>Clone Name :</b>	Epcam/1159
<b>Application :</b>	IHC
<b>Reactivity :</b>	Rat
<b>Gene :</b>	Epcam
<b>Gene ID :</b>	171577
<b>Uniprot ID :</b>	O55159
<b>Format :</b>	Bioreactor Concentrate
<b>Alternative Name :</b>	Epcam,Tacstd1
<b>Isotype :</b>	Mouse IgG1, kappa
<b>Immunogen Information :</b>	Recombinant full-length Rat Epcam protein

**Description**

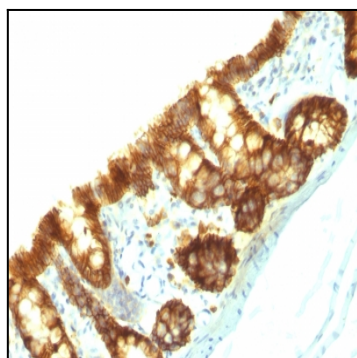
Epitopes of Epcam/1158 and Epcam/1159 monoclonal antibodies are different. EGP40 is a 40-43kDa transmembrane epithelial glycoprotein, also identified as epithelial specific antigen (ESA), or epithelial cellular adhesion molecule (Ep-CAM). It is expressed on baso-lateral cell surface in most simple epithelia and a vast majority of carcinomas.

**Product Info**

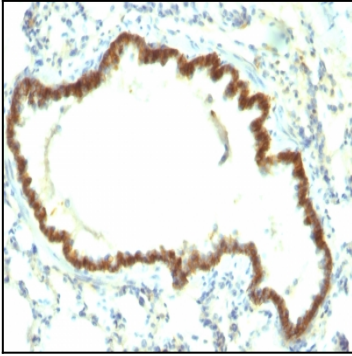
<b>Amount :</b>	0.5 ml
<b>Content :</b>	Bioreactor Concentrate
<b>Storage condition :</b>	Store the antibody at 4°C; stable for 6 months. For long-term storage; store at -20°C. Avoid repeated freeze and thaw cycles.

**Application Note**

Immunohistochemistry (Formalin-fixed) (1:50-1:100; 30 min at RT)(Staining of formalin-fixed tissues requires heating tissue sections in 10mM Tris with 1mM EDTA, pH 9.0, for 45 min at 95&degC followed by cooling at RT for 20 minutes);



Formalin-fixed, paraffin-embedded Rat Colon stained with Ep-CAM Monoclonal Antibody (Epcam/1159).



Formalin-fixed, paraffin-embedded Rat Lung stained with Ep-CAM Monoclonal Antibody (Epcam/1159).