

## 11-8022: Polyclonal Antibody to SAPK interacting protein 1/Mip1

<b>Clonality :</b>	Polyclonal
<b>Application :</b>	WB
<b>Reactivity :</b>	Human
<b>Gene :</b>	MAPKAP1
<b>Gene ID :</b>	79109
<b>Uniprot ID :</b>	Q9BPZ7
<b>Format :</b>	Purified
<b>Alternative Name :</b>	MAPKAP1,MIP1,SIN1
<b>Isotype :</b>	Rabbit IgG
<b>Immunogen Information :</b>	A partial length recombinant Mip1 protein (amino acids 250-522) was used as the immunogen for this antibody.

### Description

Stress-activated map kinase (SAPK )-interacting protein 1, also called as Mitogen-Activated Protein Kinase Associated Protein 1 (MAPKAP1), belongs to Stress-activated map kinase interacting protein 1 (SIN1) family. It is a subunit of mTORC2, which regulates cell growth and survival in response to hormonal signals. mTORC2 is activated by growth factors and also plays a critical role in AKT1 'Ser-473' phosphorylation. Except isoform 4 from its 6 isoforms , all can be incorporated into the mammalian target of rapamycin complex 2 (mTORC2) which contains MTOR, MLST8, PRR5, RICTOR, MAPKAP1 and DEPTOR. It is ubiquitously expressed in heart and skeletal muscle. Diseases associated with MAPKAP1 include bronchiolitis obliterans organizing pneumonia and nephrogenic systemic fibrosis.

### Product Info

<b>Amount :</b>	25 µg / 100 µg
<b>Purification :</b>	Protein A Chromatography
<b>Content :</b>	25 µg in 50 µl/100 µg in 200 µl PBS containing 0.05% BSA and 0.05% sodium azide. Sodium azide is highly toxic.
<b>Storage condition :</b>	Store the antibody at 4°C, stable for 6 months. For long-term storage, store at -20°C. Avoid repeated freeze and thaw cycles.

### Application Note

Western blot analysis: 1-3 µg/ml

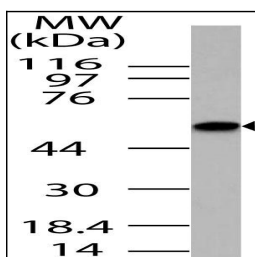


Fig-1: Western blot analysis of SAPK interacting protein 1/Mip1. Anti- SAPK interacting protein 1/Mip1 antibody (11-8022) was used at 1 µg/ml on Hela lysate.