

## 36-11112: Monoclonal Antibody to Cytokeratin 8/18(Clone : SPM141)(Discontinued)

<b>Clonality :</b>	Monoclonal
<b>Clone Name :</b>	SPM141
<b>Application :</b>	FACS,IF,WB,IHC
<b>Reactivity :</b>	Human
<b>Gene :</b>	KRT8
<b>Gene ID :</b>	3856
<b>Uniprot ID :</b>	P05787
<b>Format :</b>	Purified
<b>Alternative Name :</b>	KRT8,CYK8
<b>Isotype :</b>	Mouse IgG1 Kappa
<b>Immunogen Information :</b>	KeRatin prepaRation from human breast carcinoma MCF-7 cells

### Description

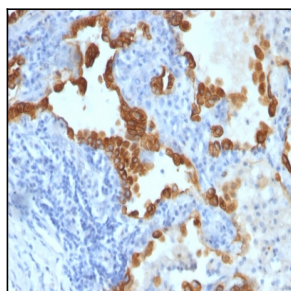
Cytokeratin 8 (CK8) belongs to the type II (or B or basic) subfamily of high molecular weight cytokeratins and exists in combination with cytokeratin 18 (CK18). This MAb cocktail recognizes all simple epithelia including glandular epithelium, for example thyroid, female breast, gastrointestinal tract, respiratory tract, and urogenital tract including transitional epithelium. All adenocarcinomas and most squamous carcinomas are positive but keratinizing squamous carcinomas are usually negative. This antibody is useful in demonstrating the presence of Paget cells; there is very little keratin 18 in the normal epidermis so only Paget cells are stained.

### Product Info

<b>Amount :</b>	100 µg
<b>Purification :</b>	Affinity Chromatography
<b>Content :</b>	100 µg in 500 µl PBS containing 0.05% BSA and 0.05% sodium azide. Sodium azide is highly toxic.
<b>Storage condition :</b>	Store the antibody at 4°C; stable for 6 months. For long-term storage; store at -20°C. Avoid repeated freeze and thaw cycles.

### Application Note

Flow Cytometry (0.5-1.0 µg/million cells in 0.1ml); Immunofluorescence (1-2 µg/ml); Western Blot (0.5-1.0 µg/ml); Immunohistology (Formalin-fixed) (0.5-1.0 µg/ml for 30 min at RT); (Staining of formalin-fixed tissues requires boiling tissue sections in 10mM Citrate Buffer, pH 6.0, for 10-20 min followed by cooling at RT for 20 minutes); Optimal dilution for a specific application should be determined.



Formalin-fixed, paraffin-embedded human Lung Carcinoma stained with Cytokeratin 8/18 Monoclonal Antibody (SPM141).