

36-11104: Monoclonal Antibody to Ep-CAM / CD326 (Rat) (Epithelial Marker)(Clone : SPM534)

Clonality :	Monoclonal
Clone Name :	SPM534
Application :	FACS,IF,WB,IP,IHC
Reactivity :	Rat
Gene :	Epcam
Gene ID :	171577
Uniprot ID :	O55159
Format :	Purified
Alternative Name :	Epcam,Tacstd1
Isotype :	Mouse IgG1, kappa
Immunogen Information :	Rat small intestine cells

Description

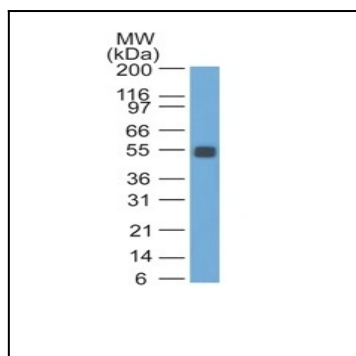
Epitope of GZ-1 and GZ-20 monoclonal antibodies are different. EGP40 is a 40-43kDa transmembrane epithelial glycoprotein, also identified as epithelial specific antigen (ESA), or epithelial cellular adhesion molecule (Ep-CAM). It is expressed on baso-lateral cell surface in most simple epithelia and a vast majority of carcinomas.

Product Info

Amount :	100 µg
Purification :	Affinity Chromatography
Content :	100 µg in 500 µl PBS containing 0.05% BSA and 0.05% sodium azide. Sodium azide is highly toxic.
Storage condition :	Store the antibody at 4°C; stable for 6 months. For long-term storage; store at -20°C. Avoid repeated freeze and thaw cycles.

Application Note

Flow Cytometry (5-10ul/million cells); Immunofluorescence (1:50-1:100); Western Blot (1:100-1:200); Immunoprecipitation (5-10ul/500ug protein lysate);Immunohistochemistry (Frozen & formalin-fixed) (1:100-1:200 for 30 min at RT)(Formalin/paraffin tissues REQUIRE digestion of tissue sections with pepsin at 1mg/ml Tris-HCl, pH 2.0 for 15 min at RT or 10 min at 37C)



Western Blot of rat Colon Lysate probed with Ep-CAM Monoclonal Antibody (SPM534).