

## 36-11103: Monoclonal Antibody to Cytokeratin, Acidic (Type I or LMW) (Epithelial Marker)(Clone : SPM115)

<b>Clonality :</b>	Monoclonal
<b>Clone Name :</b>	SPM115
<b>Application :</b>	FACS,IF,WB,IHC
<b>Reactivity :</b>	Human, Mouse, Rat, Turtle
<b>Gene :</b>	KRT77
<b>Gene ID :</b>	374454
<b>Uniprot ID :</b>	Q7Z794
<b>Format :</b>	Purified
<b>Alternative Name :</b>	KRT77,KRT1B
<b>Isotype :</b>	Mouse IgG1, kappa
<b>Immunogen Information :</b>	Human epidermal keRatin

### Description

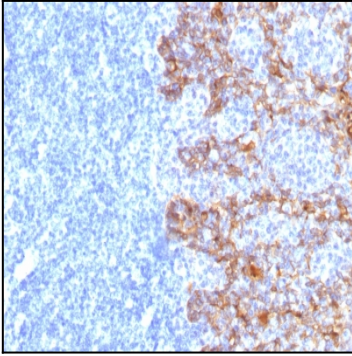
This MAb recognizes the 56.5kDa (CK10); 50kDa (CK14); 50kDa (CK15); 48kDa (CK16); 40kDa (CK19) keratins of the acidic (Type I or LMW) subfamily. Twenty human keratins are resolved with two-dimensional gel electrophoresis into acidic (pI 6.0) subfamilies. The acidic keratins have molecular weights (MW) of 56.5, 55, 51, 50, 50', 48, 46, 45, and 40kDa. MAb SPM116 recognizes the 65-67, 64, 59, 58, 56, and 52kDa keratins of basic subfamily. Many studies have shown the usefulness of keratins as markers in cancer research and tumor diagnosis. SPM115/SPM116 is a broad spectrum anti pan-keratin antibody cocktail, which differentiates epithelial tumors from non-epithelial tumors e.g. squamous vs. adenocarcinoma of the lung, liver carcinoma, breast cancer, and esophageal cancer.

### Product Info

<b>Amount :</b>	100 µg
<b>Purification :</b>	Affinity Chromatography
<b>Content :</b>	100 µg in 500 µl PBS containing 0.05% BSA and 0.05% sodium azide. Sodium azide is highly toxic.
<b>Storage condition :</b>	Store the antibody at 4°C; stable for 6 months. For long-term storage; store at -20°C. Avoid repeated freeze and thaw cycles.

### Application Note

Flow Cytometry (1-2ug/million cells); Immunofluorescence (1-2ug/ml); Western Blot (1-2ug/ml); Immunohistochemistry (Formalin-fixed) (1-2ug/ml for 30 min at RT)(Staining of formalin-fixed tissues requires heating tissue sections in 10mM Tris with 1mM EDTA, pH 9.0, for 45 min at 95&degC followed by cooling at RT for 20 minutes);



Formalin-fixed, paraffin-embedded human Tonsil stained with Cytokeratin, LMW Monoclonal Antibody (SPM115)