

## 36-11100: Monoclonal Antibody to Mitochondria (Marker for Human Cells)(Clone : MTC754)

<b>Clonality :</b>	Monoclonal
<b>Clone Name :</b>	MTC754
<b>Application :</b>	FACS,IF,WB,IHC
<b>Reactivity :</b>	Human
<b>Format :</b>	Purified
<b>Isotype :</b>	Mouse IgG1, kappa
<b>Immunogen Information :</b>	Mitochondrial fraction of HeLa cells

### Description

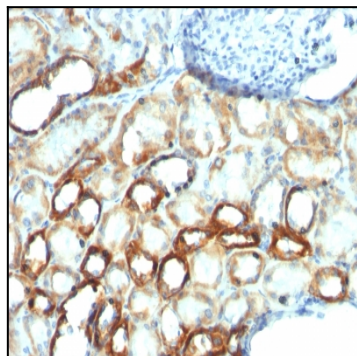
This MAb recognizes a 60kDa antigen associated with the mitochondria in cells. It is a part of a new panel of reagents, which recognizes subcellular organelles or compartments of cells. These markers may be useful in identification of these organelles in cells, tissues, and biochemical preparations. It recognizes an antigen associated with the mitochondria in cells from a wide variety of animals including insects and bacteria. It can be used to stain the mitochondria in cell or tissue preparations and can be used as a mitochondrial marker in subcellular fractions. It produces a spaghetti-like pattern in normal and malignant cells and may be used to stain mitochondria of cells in frozen tissue sections. It can also be used with paraformaldehyde fixed frozen tissue or cell preparations.

### Product Info

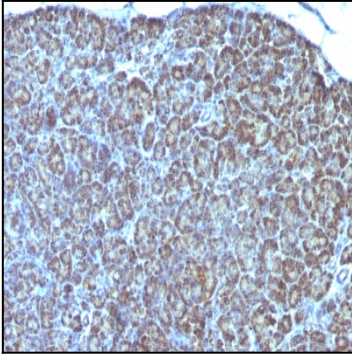
<b>Amount :</b>	100 µg
<b>Purification :</b>	Affinity Chromatography
<b>Content :</b>	100 µg in 500 µl PBS containing 0.05% BSA and 0.05% sodium azide. Sodium azide is highly toxic.
<b>Storage condition :</b>	Store the antibody at 4°C; stable for 6 months. For long-term storage; store at -20°C. Avoid repeated freeze and thaw cycles.

### Application Note

Flow Cytometry (1-2ug/million cells); Immunofluorescence (1-2ug/ml); Western Blot (0.25-0.5ug/ml); Immunohistochemistry (Formalin-fixed) (1-2ug/ml for 30 minutes at RT)(Staining of formalin-fixed tissues is enhanced by heating tissue sections in 10mM Tris with 1mM EDTA Buffer, pH 9.0, for 45 min at 95&degC followed by cooling at RT for 20 minutes)



Formalin-fixed, paraffin-embedded human Renal Cell Carcinoma stained with Mitochondria Monoclonal Antibody (MTC754).



Formalin-fixed, paraffin-embedded human Pancreas stained with Mitochondria Monoclonal Antibody (MTC754).