

## 36-11095: Monoclonal Antibody to Human Nuclear Antigen (HNA) (Human Cell Marker)(Clone : 235-1)

<b>Clonality :</b>	Monoclonal
<b>Clone Name :</b>	235-1
<b>Application :</b>	FACS,IF,IP,ICC,IHC
<b>Reactivity :</b>	Human
<b>Format :</b>	Purified
<b>Isotype :</b>	Mouse IgG1, kappa
<b>Immunogen Information :</b>	Nuclei of human myeloid leukemia biopsy cells

### Description

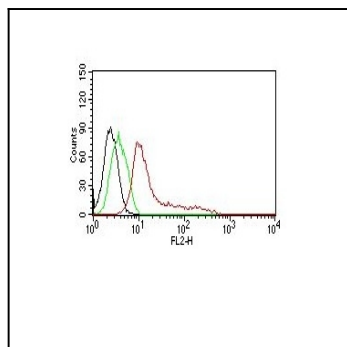
This MAb is an excellent marker for human cells in xenographic model research. It reacts specifically with human cells. It is a part of a new panel of reagents, which recognizes subcellular organelles or compartments of human cells. These markers may be useful in identification of these organelles in cells, tissues, and biochemical preparations. MAb 235-1 recognizes an antigen associated with the nuclei in human cells. It can be used to stain the nuclei in cell or tissue preparations and can be used as a nuclear marker in subcellular fractions. It produces a speckled pattern in normal and malignant cells and may be used to stain the nuclei of cells in fixed or frozen tissue sections. It can also be used with paraformaldehyde fixed frozen tissue or cell preparations.

### Product Info

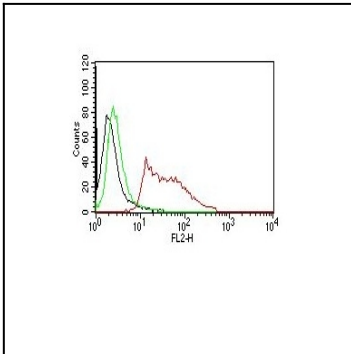
<b>Amount :</b>	100 µg
<b>Purification :</b>	Affinity Chromatography
<b>Content :</b>	100 µg in 500 µl PBS containing 0.05% BSA and 0.05% sodium azide. Sodium azide is highly toxic.
<b>Storage condition :</b>	Store the antibody at 4°C; stable for 6 months. For long-term storage; store at -20°C. Avoid repeated freeze and thaw cycles.

### Application Note

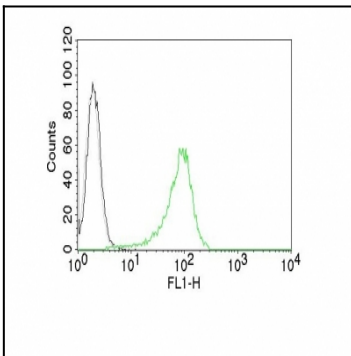
Flow Cytometry (1-2ug/million cells); Immunofluorescence (1-2ug/ml); ,Immunoprecipitation (1-2 g/500ug protein lysate);,Immunocytochemistry (Acetone-fixed cells) (1-2ug/ml for 30 minutes at RT),Immunohistology (Frozen) (1-2ug/ml for 30 minutes at RT),



Flow Cytometry of Human Nuclear Antigen on MCF-7 Cells. Black: Cells alone; Green: Isotype Control; Red: PE-labeled HNA Monoclonal Antibody (235-1).



Flow Cytometry of Human Nuclear Antigen on HeLa Cells. Black: Cells alone; Green: Isotype Control; Red: PE-labeled HNA Monoclonal Antibody (235-1).



Flow Cytometry of Human Nuclear Antigen (HNA) on 293T Cells. Black: Cells alone; Grey: Isotype Control; Green: AF488-labeled HNA Monoclonal Antibody (235-1).