

36-11093: Monoclonal Antibody to Mitochondria (Marker for Human Cells)(Clone : MTC719)

Clonality :	Monoclonal
Clone Name :	MTC719
Application :	FACS,IF,WB,IHC
Reactivity :	Human
Format :	Purified
Isotype :	Mouse IgG1, kappa
Immunogen Information :	Mitochondrial fraction of HeLa cells

Description

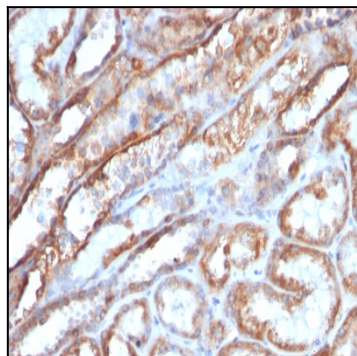
This MAb recognizes a 60kDa antigen associated with the mitochondria in cells. It is a part of a new panel of reagents, which recognizes subcellular organelles or compartments of cells. These markers may be useful in identification of these organelles in cells, tissues, and biochemical preparations. It recognizes an antigen associated with the mitochondria in cells from a wide variety of animals, but not insects and bacteria. It can be used to stain the mitochondria in cell or tissue preparations and can be used as a mitochondrial marker in subcellular fractions. It produces a spaghetti-like pattern in normal and malignant cells and may be used to stain mitochondria of cells in fixed or frozen tissue sections. It can also be used with paraformaldehyde fixed frozen tissue or cell preparations.

Product Info

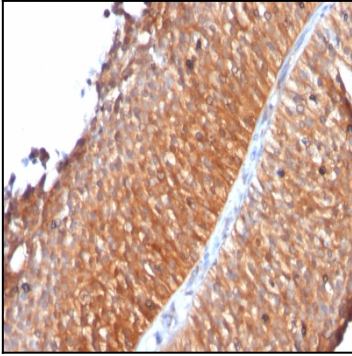
Amount :	100 µg
Purification :	Affinity Chromatography
Content :	100 µg in 500 µl PBS containing 0.05% BSA and 0.05% sodium azide. Sodium azide is highly toxic.
Storage condition :	Store the antibody at 4°C; stable for 6 months. For long-term storage; store at -20°C. Avoid repeated freeze and thaw cycles.

Application Note

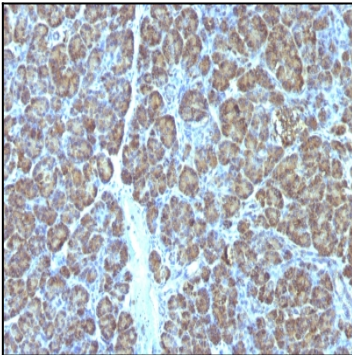
Flow Cytometry (1-2ug/million cells); Immunofluorescence (1-2ug/ml); Western Blot (0.25-0.5ug/ml); Immunohistochemistry (Formalin-fixed) (1-2ug/ml for 30 minutes at RT)(Staining of formalin-fixed tissues requires heating tissue sections in 10mM Tris with 1mM EDTA, pH 9.0, for 45 min at 95°C followed by cooling at RT for 20 minutes);



Formalin-fixed, paraffin-embedded human Renal Cell Carcinoma stained with Mitochondria Monoclonal Antibody (MTC719)



Formalin-fixed, paraffin-embedded human Bladder Carcinoma stained with Mitochondria Monoclonal Antibody (MTC719)



Formalin-fixed, paraffin-embedded human Pancreas stained with Mitochondria Monoclonal Antibody (MTC719).