

## 36-11077: Monoclonal Antibody to Golgi Complex (Marker for Human Cells)(Clone : AE-6)

<b>Clonality :</b>	Monoclonal
<b>Clone Name :</b>	AE-6
<b>Application :</b>	FACS,IF,WB,ICC,IHC
<b>Reactivity :</b>	Human
<b>Format :</b>	Purified
<b>Isotype :</b>	Mouse IgG1, kappa
<b>Immunogen Information :</b>	SU-DHL-1 large cell lymphoma cells

### Description

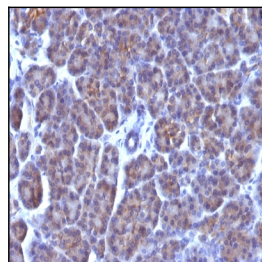
This MAb recognizes an antigen associated with the Golgi complex in human cells only. It can be used to stain the Golgi complex in cell or tissue preparations and can be used as a Golgi marker in subcellular fractions. It produces a diffuse staining pattern of the Golgi zone in normal and malignant cells. This MAb is an excellent marker for human cells in xenographic model research. It reacts specifically with human cells. The Golgi apparatus is an organelle present in all eukaryotic cells that forms a part of the endomembrane system. The primary function of the Golgi apparatus is to process and package macromolecules synthesized by the cell for exocytosis or use within the cell. The Golgi is made up of a stack of flattened, membrane-bound sacs known as cisternae, with three functional regions: the cis face, medial region and trans face. Each region consists of various enzymes that selectively modify the macromolecules passing through them, depending on where they are destined to reside. Several spherical vesicles that have budded off of the Golgi are present surrounding the main cisternae.

### Product Info

<b>Amount :</b>	100 µg
<b>Purification :</b>	Affinity Chromatography
<b>Content :</b>	100 µg in 500 µl PBS containing 0.05% BSA and 0.05% sodium azide. Sodium azide is highly toxic.
<b>Storage condition :</b>	Store the antibody at 4°C; stable for 6 months. For long-term storage; store at -20°C. Avoid repeated freeze and thaw cycles.

### Application Note

Flow Cytometry (0.5-1.0ug/million cells);Immunofluorescence (1-2ug/ml); Western Blot (1-2ug/ml);Immunocytochemistry (Acetone or paraformaldehyde fixed) (1-2ug/ml for 30 min);Immunohistochemistry (Formalin-fixed) (1-2ug/ml for 30 minutes at RT)(Staining of formalin-fixed tissues requires heating tissue sections in 10mM Tris with 1mM EDTA, pH 9.0, for 45 min at 95&degC followed by cooling at RT for 20 minutes);



Formalin-fixed, paraffin-embedded human Pancreas stained with Golgi Monoclonal Antibody (AE-6).