

## 36-11069: Monoclonal Antibody to Cytokeratin, pan (Epithelial Marker)(Clone : AE-1/AE-3)(Discontinued)

<b>Clonality :</b>	Monoclonal
<b>Clone Name :</b>	AE-1/AE-3
<b>Application :</b>	FACS,IF,WB,IHC
<b>Reactivity :</b>	Human,Monkey,Bovine,Dog,Rabbit,Mouse,Rat,Chicken
<b>Gene :</b>	KRT77
<b>Gene ID :</b>	374454
<b>Uniprot ID :</b>	Q7Z794
<b>Format :</b>	Purified
<b>Alternative Name :</b>	KRT77,KRT1B
<b>Isotype :</b>	Mouse IgG
<b>Immunogen Information :</b>	Human epidermal keRatin

### Description

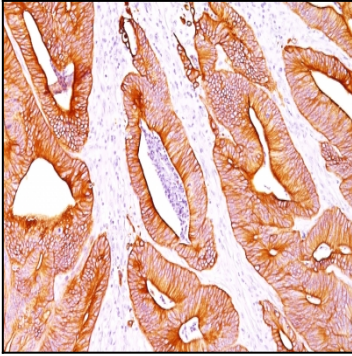
Twenty human keratins are resolved with two-dimensional gel electrophoresis into acidic (pI 6.0) subfamilies. This antibody cocktail recognizes acidic (Type I or LMW) and basic (Type II or HMW) cytokeratins, which 67kDa (CK1); 64kDa (CK3); 59kDa (CK4); 58kDa (CK5); 56kDa (CK6); 52kDa (CK8); 56.5kDa (CK10); 50kDa (CK14); 50kDa (CK15); 48kDa (CK16); 40kDa (CK19). Many studies have shown the usefulness of keratins as markers in cancer research and tumor diagnosis. AE-1/AE-3 is a broad spectrum anti pan-cytokeratin antibody cocktail, which differentiates epithelial tumors from non-epithelial tumors e.g. squamous vs. adenocarcinoma of the lung, liver carcinoma, breast cancer, and esophageal cancer. It has been used to characterize the source of various neoplasms and to study the distribution of cytokeratin containing cells in epithelia during normal development and during the development of epithelial neoplasms. This antibody stains cytokeratins present in normal and abnormal human tissues and has shown high sensitivity in the recognition of epithelial cells and carcinomas.

### Product Info

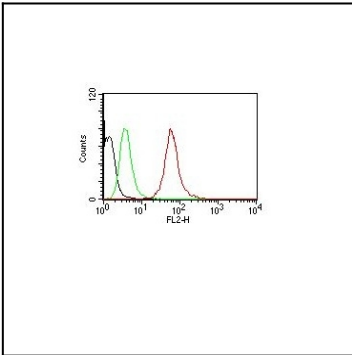
<b>Amount :</b>	100 µg
<b>Purification :</b>	Affinity Chromatography
<b>Content :</b>	100 µg in 500 µl PBS containing 0.05% BSA and 0.05% sodium azide. Sodium azide is highly toxic.
<b>Storage condition :</b>	Store the antibody at 4°C; stable for 6 months. For long-term storage; store at -20°C. Avoid repeated freeze and thaw cycles.

### Application Note

Flow Cytometry (0.5-1.0 µg/million cells in 0.1ml); Immunofluorescence (1-2 µg/ml); Western Blot (0.5-1.0 µg/ml for 2 hours at RT); Immunohistology (Formalin-fixed) (0.25-0.5 µg/ml for 30 min at RT); (Staining of formalin-fixed tissues requires boiling tissue sections in 10mM Citrate buffer, pH 6.0, for 10-20 min followed by cooling at RT for 20 minutes); Optimal dilution for a specific application should be determined.



Formalin-fixed, paraffin-embedded human Colon Carcinoma stained with pan Cytokeratin Monoclonal Antibody cocktail (AE-1/AE3).



Flow Cytometry of human Pan-Cytokeratins on HeLa Cells. Black: Cells alone; Green: Isotype Control; Red: PE-labeled Pan-Cytokeratin Monoclonal Antibody (AE-1/AE-3).