

36-11055: Monoclonal Antibody to Mitochondria (Marker for Human Cells)(Clone : SPM198)

Clonality :	Monoclonal
Clone Name :	SPM198
Application :	IF,WB,IHC
Reactivity :	Human
Format :	Purified
Isotype :	Mouse IgG1, kappa
Immunogen Information :	Semi-purified mitochondrial preparation

Description

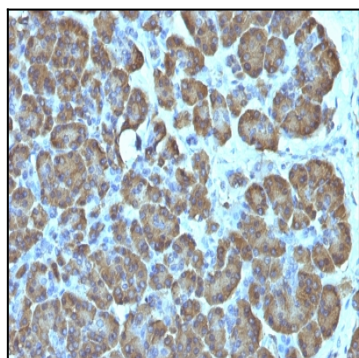
This MAb recognizes a 60kDa antigen associated with the mitochondria in human cells. It can be used to stain mitochondria in cell or tissue preparations and can be used as a mitochondrial marker in subcellular fractions. It produces a spaghetti-like pattern in normal and malignant cells. This antibody is an excellent marker for human cells in xenographic model research. It reacts specifically with human cells, including neurons and embryonic stem cells.

Product Info

Amount :	100 µg
Purification :	Affinity Chromatography
Content :	100 µg in 500 µl PBS containing 0.05% BSA and 0.05% sodium azide. Sodium azide is highly toxic.
Storage condition :	Store the antibody at 4°C; stable for 6 months. For long-term storage; store at -20°C. Avoid repeated freeze and thaw cycles.

Application Note

Immunofluorescence (1-2ug/ml); Western Blot (0.25-0.5ug/ml); Immunohistochemistry (Formalin-fixed) (1-2ug/ml for 30 minutes at RT)(Staining of formalin-fixed tissues is enhanced by heating tissue sections in 1mM EDTA Buffer, pH 8.5-9.5, for 45 min at 95°C followed by cooling at RT for 20 minutes)



Formalin-fixed, paraffin-embedded human Pancreas stained with Mitochondria Monoclonal Antibody (SPM198).