

## 36-11047: Monoclonal Antibody to Biotin (Vitamin B7 or Vitamin H)(Clone : SPM375)

<b>Clonality :</b>	Monoclonal
<b>Clone Name :</b>	SPM375
<b>Application :</b>	Confocal Microscopy,FACS,IF,WB,IHC
<b>Reactivity :</b>	All species
<b>Format :</b>	Purified
<b>Isotype :</b>	Mouse IgG1, kappa
<b>Immunogen Information :</b>	Biotinylated sheep immunoglobulin

### Description

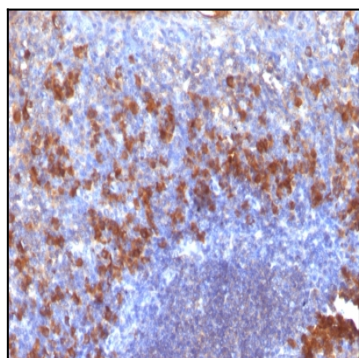
It recognizes both the free and protein-conjugated (either soluble or cell bound) form of biotin. This MAb is highly specific to biotin and shows no cross-reaction with other structurally related compounds. It has a very high affinity for biotin and is excellent for use in various amplification techniques. In some applications, localization of biotinylated probes with avidin produces unacceptably high background staining. Anti-biotin antibody may be substituted to decrease this noise.

### Product Info

<b>Amount :</b>	100 µg
<b>Purification :</b>	Affinity Chromatography
<b>Content :</b>	100 µg in 500 µl PBS containing 0.05% BSA and 0.05% sodium azide. Sodium azide is highly toxic.
<b>Storage condition :</b>	Store the antibody at 4°C; stable for 6 months. For long-term storage; store at -20°C. Avoid repeated freeze and thaw cycles.

### Application Note

Confocal Microscopy; Flow Cytometry (1-2ug/million cells); Immunofluorescence (1-2ug/ml); In situ Nucleic Acid Hybridization; Western Blot; Immunohistochemistry (Formalin-fixed) (1-2ug/ml for 30 minutes at RT) (No special pretreatment is required for the immunohistochemical staining of formalin-fixed, paraffin-embedded tissues.)



Formalin-fixed, paraffin-embedded human Tonsil stained with biotinylated Lambda Light Chain probe followed by anti-biotin Monoclonal Antibody (SPM375).