

36-11035: Monoclonal Antibody to Cytokeratin, pan (Epithelial Marker)(Clone : PAN-CK (Cocktail))

Clonality :	Monoclonal
Clone Name :	PAN-CK (Cocktail)
Application :	FACS,IF,WB,IHC
Reactivity :	Rat, Mouse, Human
Gene :	KRT77
Gene ID :	374454
Uniprot ID :	Q7Z794
Format :	Purified
Alternative Name :	KRT77,KRT1B
Isotype :	Mouse IgG, kappa
Immunogen Information :	Human epidermal keRatin

Description

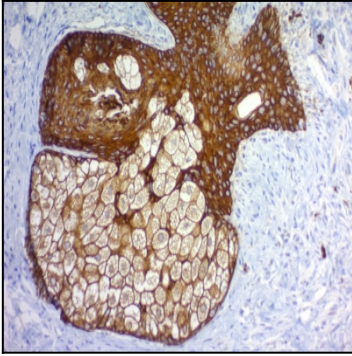
Twenty human keratins are resolved with two-dimensional gel electrophoresis into acidic (pI 6.0) subfamilies. This antibody cocktail recognizes acidic (Type I or LMW) and basic (Type II or HMW) cytokeratins, with 67kDa (CK1); 64kDa (CK3); 59kDa (CK4); 58kDa (CK5); 56kDa (CK6); 55kDa (CK7); 52kDa (CK8); 56.5kDa (CK10); 53kDa (CK13); 50kDa (CK14); 50kDa (CK15); 48kDa (CK16); 46kDa (CK17); 45kDa (CK18) and 40kDa (CK19). Many studies have shown the usefulness of keratins as markers in cancer research and tumor diagnosis. KRT-PAN is a broad spectrum anti pan-cytokeratin antibody cocktail, which differentiates epithelial tumors from non-epithelial tumors e.g. squamous vs. adenocarcinoma of the lung, liver carcinoma, breast cancer, and esophageal cancer. It is useful in characterizing the source of various neoplasms and to study the distribution of cytokeratin containing cells in epithelia during normal development and during the development of epithelial neoplasms. This antibody stains cytokeratins present in normal and abnormal human tissues and shows high sensitivity in the recognition of epithelial cells and carcinomas.

Product Info

Amount :	100 µg
Purification :	Affinity Chromatography
Content :	100 µg in 500 µl PBS containing 0.05% BSA and 0.05% sodium azide. Sodium azide is highly toxic.
Storage condition :	Store the antibody at 4°C; stable for 6 months. For long-term storage; store at -20°C. Avoid repeated freeze and thaw cycles.

Application Note

Flow Cytometry (0.5-2ug/million cells); Immunofluorescence (1-2ug/ml); Western Blot (0.5-2ug/ml for 2 hours at RT);Immunohistochemistry (Formalin-fixed) (1-2ug/ml for 30 minutes at RT),(Staining of formalin-fixed tissues requires heating tissue sections in 10mM Tris with 1mM EDTA, pH 9.0, for 45 min at 95 °C followed by cooling at RT for 20 minutes),



Formalin-fixed, paraffin-embedded human Skin stained with Cytokeratin, pan Monoclonal Antibody cocktail (PAN-CK).